

## **Extended Producer Responsibility Plan of Business Octane Solutions Private Limited**

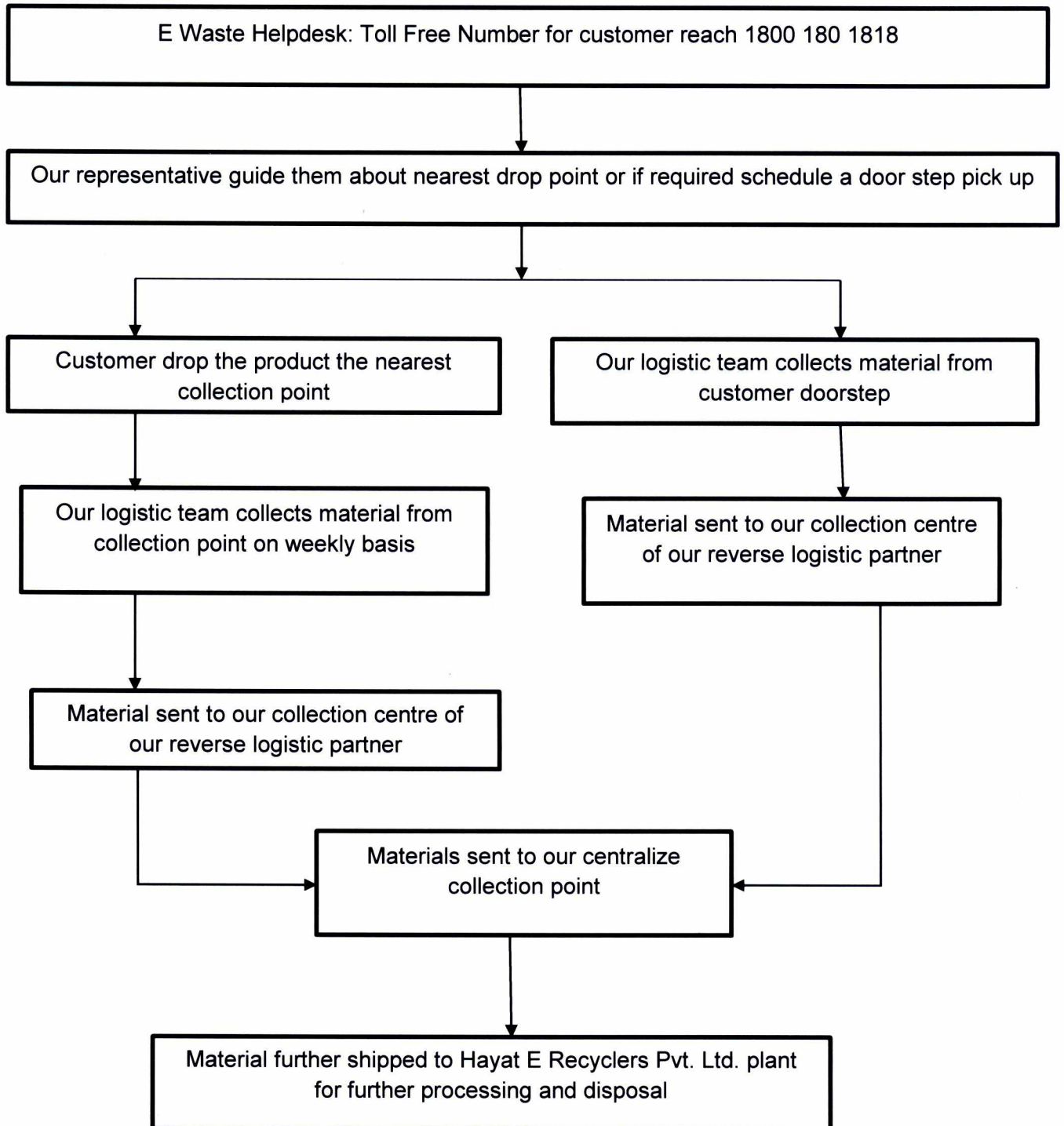
**General scheme of collection: -**

**Business Octane Solutions Private Limited** is a producer as per E- Waste (Management) Rules, 2016. The said producer is importer and seller of Television sets [including sets based on {Liquid Crystal Display and Light Emitting Diode technology}] (CEEW1) and Telephones (ITEW12). **Business Octane Solutions Private Limited** for managing its Extended Producer Responsibility has made an agreement with **M/s. Hayat E Recyclers Pvt. Ltd.**, Recycler/Dismantler registered with UPPCB for management, collection and dismantling/recycling of all our e-waste.

### **Modes of Collection**

- As a part of agreement **Hayat E Recyclers Pvt. Ltd.** Recycler/Dismantler collects all our E-waste generated from the collection points and recycle/dismantle the same at their plant at Hapur (UP). Further all process of recycling is done in an environmentally sound manner.
- **Hayat E Recyclers Pvt. Ltd.** is having an agreement with reverse logistic partner **M/s. Om Logistics Ltd.** for collection and transportation of E-waste in environmentally sound manner.
- **Hayat E Recyclers Pvt. Ltd.** (recycler/our e-waste management partner) is having all authorisation related to e-waste dismantling from UPPCB and having all consents related to Air/water. They have a capacity of 15000 MTA per annum.
- If any customer wants to handover the old product they can easily reach to Collection points and give the EOL products directly or can call on Toll Free Number 1800 180 1818 for suggestion/clarification as well as for arranging a pick up from our side.
- Customer can get location/state/area wise list of Authorized Dealer/Distributors by visiting our website <http://www.businessoctane.com/>.
- We are selling/operating all over in India, and we shall use our recyclers/dismantler's logistics partner **M/s. Om Logistics Ltd.** facility for the collection of e-waste from end consumer.
- Collection point list is attached.

## E - Waste Channelization Flow Chart



- The Company on receipt of confirmation from E-WASTE recycler towards collection of E-WASTE from Customer location shall deliver the appreciation letter to customer with company incentive offer.
- Company shall deliver the discount coupon at the registered address of customer within the timeframe of 7-10 days.
- Customer can use this coupon and avail the discount while he / she may purchase '**BUSINESS OCTANE SOLUTIONS PRIVATE LIMITED**' supplier or importer of IP phones & led and interactive monitors.) from Authorized Dealers / Distributors of Company and the validity of discount coupon is for a period of 3 months from the date of issue.
- Customer can get location/ state/ area wise list of Authorized Dealer / Distributors by visiting our website <http://www.businessoctane.com/>.

In case the Customer intends to exchange the existing E-WASTE EEE (i.e. '**BUSINESS OCTANE SOLUTIONS PRIVATE LIMITED**' supplier or importer of IP phones & led and interactive monitors.) of company and wish to purchase the new IP phones & led and interactive monitors, he / she may get a discount @ 10% on MRP through our Authorized Dealers / Distributors.

- We had agreement with Hayat E-recyclers and Hayat E-recyclers had agreement with OM LOGISTICS LTD for the LOGISTICS work.
- OM LOGISTICS LTD have pan India service for the logistics work.
- OM LOGISTICS LTD have fully safe and sound logistics facility for the collection of e-waste.
- OM LOGISTICS LTD have full facility to collect various parts from all over India.

For **BUSINESS OCTANE SOLUTIONS PRIVATE LIMITED;**



3/19

TOWER C, JMD MEGAPOLIS, 5<sup>TH</sup> FLOOR, P 501-P 512, SECTOR 48, SOHNA ROAD, GURGAON, HARYANA-122018



# BUSINESS OCTANE SOLUTIONS PRIVATE LIMITED

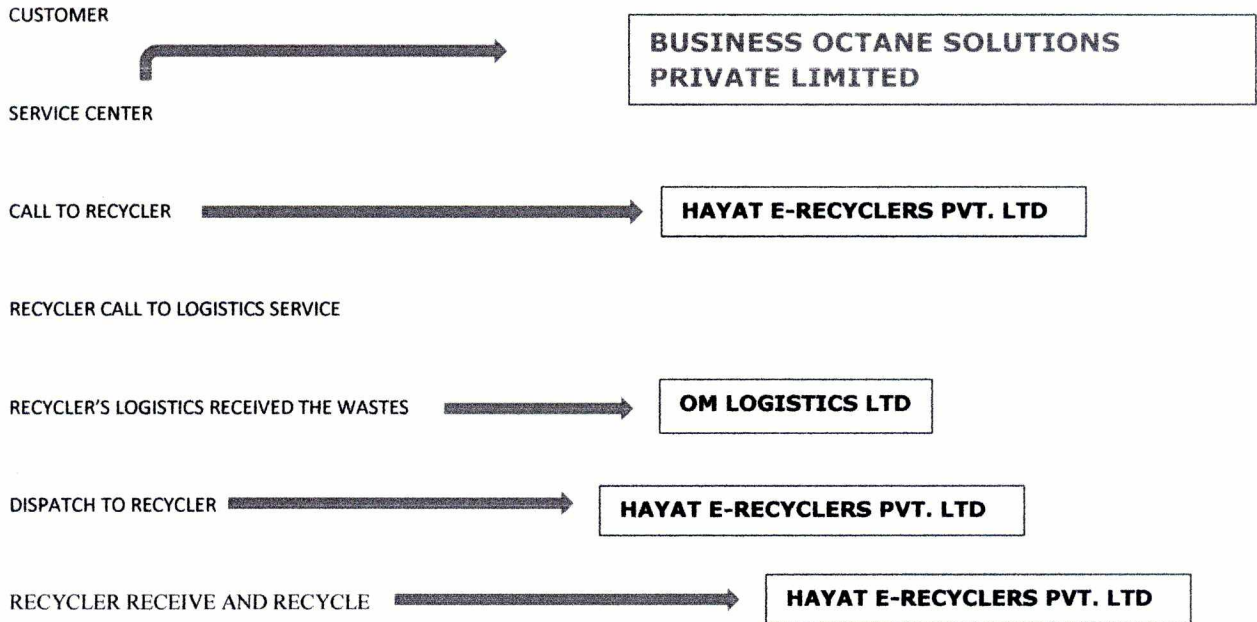
## CHANNELIZATION OF E-WASTE AND ITS FLOW-CHART

- I. Customer use the product and after end of life of product, customer go to service centre to return the product.
- II. **BUSINESS OCTANE SOLUTIONS PRIVATE LIMITED** gives 100 RS for returning product as per **payback facility**.
- III. After that product is collected from the service centre and send it to recycler.

## FLOW-CHART OF CHANNELIZATION

HAYAT E-RECYCLERS PVT. LTD have contract with OM LOGISTICS LTD corporate office at 130, Ring Road, Transport Centre, Near Punjabi Bagh Flyover, New Delhi-110055

### CHANNELIZATION FLOW CHART



For **BUSINESS OCTANE SOLUTIONS PRIVATE LIMITED;**



4/19

<b>OM GROUP NETWORK DIRECTORY</b>			
Website : www.omlogistics.co.in			
STATE/ BRANCH	ADDRESS		
<b>HYDERABAD CODE-1601</b>	OM LOGISTICS LTD SURVEY NO. 5-57/58/59 NEAR TRINETRA WAREHOUSE AYODHYA X ROAD, KOMPALLY, DIST. : RANGA REDDY, SECUNDERABAD, TELANGANA PIN : 500014		
<b>TELANGANA HYDERABAD AIRPORT CODE-1606</b>	OM LOGISTICS LTD H.NO. 23-171/3, NEAR ING KOTAK MAHINDRA BANK N.H - 7, SHAMSHABAD R.R DIST, HYDERABAD, PIN : 501218	<b>TELANGANA GAGILAPUR CODE - 1612</b>	OM LOGISTICS LTD GAGILALLPUR VILLAGE, GAGILAPUR MANDAL R.R DIST, PIN : 500043
<b>TELANGANA NALGONDA C 615</b>	OM LOGISTICS LTD NALGONDA BYPASS CHENNAI ROAD NEAR HP PETROL PUMP TELANGANA PIN : 508001	<b>TELANGANA CHERLAPALLY CODE - 1611</b>	OM LOGISTICS LTD H.NO.-2-10-497 EC NAGAR, PHASE -3 CHERLAPALLY, PIN-500051
<b>TELANGANA JEEDIMETLA CODE-1610</b>	OM LOGISTICS LTD SURVEY NO. : 298/PART PHASE-V, DHULAPALLY ROAD, BESIDE 2 <sup>ND</sup> INDUSTRIAL GATE JEEDIMETLA, PIN : 500055	<b>TELANGANA PATANCHERU CODE- 1608</b>	14-62, SRIMATI COMPLEX, SRI RAM NAGAR COLONY OPP. ALLWATAN WATCHES LTD, PATHANCHERU DIST. MEDAK, PIN : 502319
<b>TELANGANA ZAHEERABAD CODE - 1607</b>	OM LOGISTICS LTD SURVEY NO. : 110 & 113, BULCHINNELLY VILLAGE, NEAR MG AUTOMOTIVE PLANT. DISTT. : MEDAK, ZAHEERABAD, TELANGANA, PIN : 502220.		
<b>ANDHRA PRADESH VIJAYAWADA CODE-1609</b>	OM LOGISTICS LTD PLOT NO. 232 4 <sup>TH</sup> CROSS ROAD, NEW AUTO NAGAR NEAR AITTHI HOTEL VIJAYAWADA PIN : 520007	<b>ANDHRA PRADESH VISAKHAPATNAM CODE-3201</b>	OM LOGISTICS LTD PLOT NO. 31 BLOCK-E, NEAR GREEN CITY,AUTO NAGAR, GAJUWAKA MANDALAM, VISAKHAPATNAM, PIN : 530012
<b>ANDHRA PRADESH GUNTUR CODE - 1614</b>	OM LOGISTICS LTD NEAR AT ETUKURU BYEPASS BESIDE PUR KANTA GUNTUR 522003 ANDHRA PARDESH	<b>ANDHRA PRADESH RAJAMUNDRY CODE-1616</b>	OM LOGISTICS LTD GANDALAMPUNTA, MORAMPUNDI, NEAR PARK, RAJAMUNDRY ANDHRA PRADESH, PIN : 533101
<b>ANDHRA PRADESH TADA CODE-1620</b>	OM LOGISTICS LTD 3-168,NEAR NIPPO FACTORY TADA KANDRIGA ,TADA NELLORE DISTRICT-524401	<b>ANDHRA PRADESH TIRUPATI CODE- 1011</b>	OM LOGISTICS LTD PLOT NO:52, OPP SRINATH PARK HOTEL RENIGUNTA ROAD, AUTO NAGAR, TIRUPATI - 517506
<b>ANDHRA PRADESH NELLORE CODE-1016</b>	OM LOGISTICS LTD PLOT NO 17 WOOD COMPLEX NEAR AYYAPPA GUDI CENTER MINI BY PASS ROAD NELLORE-524004	<b>ANDHRA PRADESH CHITTOOR CODE-1017</b>	OM LOGISTICS LTD DOOR NO. 4-474, C,B ROAD GREAMPSPET, CHITTOOR - 517002
<b>ANDHRA PRADESH SRIKAKULAM CODE-3202</b>	OM LOGISTICS LTD DOOR NO 3-78 KOSTA VILLAGE RANASTHALAM MANDAL SRIKAKULAM-532407		

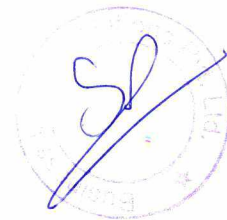


S/19

<b>ASSAM</b>	OM LOGISTICS LTD.	<b>ASSAM</b>	OM LOGISTICS LTD.
<b>GUWAHATI</b> <b>802</b>	M/S LODHASONS CONSULTANCY SERVICES PRIVATE LIMITED, LAKE UF SKI NRIPEN DAS ,BETAKUCHI, BEHIND	<b>GUWAHATI-AIRPORT</b> <b>CODE-822</b>	NEAR MS GATE DEKHAPARA POST AIRPORT GUWAHATI AIRPORT PIN 781024
<b>ASSAM</b>	OM LOGISTICS LTD.	<b>ASSAM</b>	OM LOGISTICS LTD.
<b>BAXIRAHAT</b> <b>CODE-823</b>	VIA/POST - CHAGOLIA 2 ASSAM MORE BAXIRAHAT DIST- DHUBRI ASSAM - 783335	<b>DIBRUGARH</b> <b>CODE-825</b>	BONGAL GAON PO:-BANIPUR DIBRUGARH-786003
<b>ASSAM</b>	OM LOGISTICS LTD.	<b>ASSAM</b>	OM LOGISTICS LTD.
<b>TEZPUR</b> <b>CODE-833</b>	SAIKIA CHNBARI DEKAGAON (MAZAK DEKA CHUBARI), NEAR GOSHWAMI NARSING HOME, POST OFFICE	<b>TINSUKIA</b> <b>CODE-834</b>	VILLAGE- LAIPULI KAPTANCHUK, NEAR VIVEKANAND KENDRIYA VILUYALAYA, P.O.-LAIPULI, DIST-TINSUKIA, PIN-
<b>WEST BENGAL</b>	OM LOGISTICS LTD	<b>WEST BENGAL</b>	OM LOGISTICS LTD
<b>HIDE ROAD</b> <b>CODE - 801</b>	P-46 EXTN.NEAR BRACE BRIDGE RAILWAY STATION,HIDE ROAD, KOLKATA-700088 WEST BENGAL	<b>KOLKATA AIRPORT</b> <b>CODE - 803</b>	2 NO PANDIT MATILAL COLONY NEAR -AIRPORT 2.5 NO GATE KOLKATA - 700081
<b>WEST BENGAL</b>	OM LOGISTICS LTD	<b>WEST BENGAL</b>	OM LOGISTICS LTD
<b>KHARAGPUR</b> <b>CODE - 805</b>	SHOP NO. - 6, MAITY COMPLEX SAHA CHOWK, N.H. - 6, MUMBAI ROAD P.O. - RAKHAJUNGLE, KHARAGPUR, WEST BENGAL, 721304	<b>HALDIA</b> <b>CODE-806</b>	BASUDEVPUR, PURBA MADINIPUR HALDIA - KOLKATA ( WEST BENGAL ) PIN -721602
<b>WEST BENGAL</b>	OM LOGISTICS LTD	<b>WEST BENGAL</b>	OM LOGISTICS LTD
<b>KOLKATA CENTRAL</b> <b>CODE - 807</b>	P-1 NEW CIT ROAD ROOM NO-11, 2ND FLOOR KOLKATA- 700073	<b>HOWRAH STATION</b> <b>CODE - 808</b>	9 NO CHARAGHAT NEAR RAMKRISHNAPUR LONCH GHAT HOWRAH - 711101
<b>WEST BENGAL</b>	OM LOGISTICS LTD	<b>TATA MOTORS</b>	OM LOGISTICS LTD
<b>KOLKATA-DHULAGARH HUB</b> <b>CODE - 809</b>	SANKRAIL INDUSTRIAL PARK NH-6 JAIL NO-1065 BHAGBATPUR,DHULAGARHI, P.S - SANKRAIL HOWRAH, PIN-711302	<b>CODE-836</b>	SANKRAIL INDUSTRIAL PARK BHAGBATPUR,DHULAGARHI P.S -SANKRAIL HOWRAH, PIN-711302
<b>WEST BENGAL</b>	OM LOGISTICS LTD	<b>WEST BENGAL</b>	OM LOGISTICS LTD
<b>SILIGURI</b> <b>CODE - 811</b>	EKTIASAL, EASTERN BY PASS SILIGURI , NEAR BANESWAR MORE, P.OSILIGURI, P.SBHAKTI NAGAR, DIST- B	<b>DURGAPUR</b> <b>CODE - 812</b>	PLOT NO-473 BHIRANGI MORE DISTRICT-BURDWAN DURGAPUR WEST BENGAL-713213
<b>WEST BENGAL</b>	OM LOGISTICS LTD	<b>WEST BENGAL</b>	OM LOGISTICS LTD
<b>DUNLOP KOLKATA</b> <b>CODE - 813</b>	ASHOK GAH ZUB/1,DUNLOP P.S- BARANAGAR DIST-24PGS(N),KOLKATA-700108.	<b>DANKUNI KOLKATA</b> <b>CODE - 814</b>	OM LOGISTICS LTD HIMALAYA PLAZA NATIONAL HIGHWAY NU-2 OLD DELHI ROAD,ROOM NO.-2 DANKUNI HOOGHLY WEST BENGAL-712311
<b>WEST BENGAL</b>	OM LOGISTICS LTD	<b>WEST BENGAL</b>	OM LOGISTICS LTD
<b>SHANTIPUR</b> <b>CODE-815</b>	PLOT NO-462, RS NO-244 JAIL NO-73 PADCHA KHATIAN NO-2389, PO-BELEMATH PS-SHANTIPUR, DIST-NADIA, W.B, PIN-741402	<b>MURSHIDABAD</b> <b>CODE-832</b>	CHALTIA, PRANTIK PARA BERHAMPORE DIST: MURSHIDABAD PIN: 742165
<b>WEST BENGAL</b>	OM LOGISTICS LTD	<b>WEST BENGAL</b>	OM LOGISTICS LTD
<b>CHANDANI CHAWK-KOLKATA</b> <b>CODE-826</b>	27A WATERLOO STREET MEHATA HOUSE, NEAR AMBAR RESTURANT GROUND FLOOR KOLKATA PIN CODE 700060	<b>JAIGAON/HASIMARA</b> <b>CODE- 838</b>	C/O SMT.ALO BHOWMICK NEW HASIMARA NEAR N.H 31 SUBASH PALLY PO.HASIMARA PS JAIGAON MUZA SATALI DIST ALIPURDUAR
<b>WEST BENGAL</b>	OM LOGISTICS LTD	<b>WEST BENGAL</b>	OM LOGISTICS LTD
<b>PURNIA</b> <b>CODE-4007</b>	PURNIA MOD VILLAGE DALKHOLA DISTT.UTTAR DINAJPUR PIN-733201	<b>BURDWAN</b> <b>CODE-839</b>	OM LOGISTICS LTD PLUSE NO. 145, NH-2, SKIPALLY, GOPALNAGAR DIST. BARDHAMAN WEST BENGAL , PIN- 713103
<b>BIHAR</b>	OM LOGISTICS LTD	<b>BIHAR</b>	OM LOGISTICS LTD
<b>PATNA</b> <b>CODE - 4002</b>	NEAR NH-30 BERINO BRAKAT PETROL PUMP NEAR PATNA MARBLE NAND LAL CHAPRA KRISHNA NIKETAN SUHOOL KUAB, PATNA - 800007	<b>BHAGALPUR</b> <b>CODE-4008</b>	ZERO MILE PATNA ROAD BHAGALPUR BIHAR - 812001
<b>BIHAR</b>	OM LOGISTICS LTD	<b>BIHAR</b>	OM LOGISTICS LTD
<b>MUZAFFARPUR</b> <b>4111</b>	BAIRIYA,DHARBANGA ROAD NEAR JAI BAJRANG DHARAM KANTA MUZAFFARPUR- 842001	<b>HAZIPUR</b> <b>CODE-4112</b>	OM LOGISTICS LTD VILL SUJANPUR,P.S INDUS AKA JANUARA ROAD IN FRONT OF PEPSICO HAZIPUR - BIHAR
<b>BIHAR</b>	OM LOGISTICS LTD.	<b>BIHAR</b>	KARMANASA OFFICE
<b>RAXOUL</b> <b>CODE- 3414</b>	RAM GOVIND RAM ROAD, FALL MANDI, RAXOUL EAST CHAMPARAN, BIHAR, 845305	<b>KARMANASA</b> <b>CODE-4011</b>	NEAR KARMANASA RAILWAY STATION NATIONAL HIGHWAY 2



<b>CHHATTISGARH RAIPUR CODE - 2502</b>	OM LOGISTICS LTD TATI BANDH CHOWK NEAR SHIV NATH HYUNDAI BESIDE UNION BANK OF INDIA, RAIPUR (C.G.) 492099	<b>CHHATTISGARH BILASPUR CODE - 4104</b>	OM LOGISTICS LTD 2/27 VYAPAR VIHAR, 2/27 VYAPAR VIHAR OLD RTO COMPOUND BILASPUR CHATTISGARH-495001
<b>CHHATTISGARH SARAIPALLI CODE-3413</b>	OM LOGISTICS LTD CHATTISGARH SARAIPALI SHYAM DHABA A VILLAGE BHOTHAL DIH POST CHATTISGARH SARAIPALI DIST, MAHASAMUND PIN CODE 493558		
<b>DELHI BAWANA CODE - 1341</b>	PLOT NO.155/469 FIRNI ROAD NEAR SHIV DHARAM KATA VILLAGE POOTH KHURD DELHI-110039	<b>DELHI KAPASHERA CODE - 1305</b>	PALAM GURGAON ROAD OPP. RAJASTHAN HIGHWAY PETROL PUMP KAPASHERA NEW DELHI-110037
<b>DELHI NARELA CODE-1360</b>	OM LOGISTICS LTD PLOT NO. 82, NARELA BHUKGARH SHIV MANDIR PIN CODE-110040	<b>DELHI NANGLI POONA CODE - 1329</b>	OM LOGISTICS LTD KHASRA NO 35/13 GROUND FLOOR NANGLI POONA NEAR PUNJABI VILLAS FARM HOUSE, DELHI- 110036
<b>DELHI DELHI-UP BORDER M/ LI HUB CC 1343</b>	OM LOGISTICS LTD 6TH MILE STONE, GYANI BORDER OPP.APSRA CINEMA NEAR DILSHAD GARDEN METRO STATION, UP BORDER, CHAZIABAD, PIN NO.	<b>DELHI DELHI-UP BORDER MANDOLI BRANCH CODE - 1343</b>	OM LOGISTICS LTD 6TH MILE STONE, GYANI BORDER OPP.APSRA CINEMA NEAR DILSHAD GARDEN METRO STATION, UP BORDER, CHAZIABAD, PIN NO.
<b>DELHI OKHLA CODE-1301</b>	OM LOGISTICS LTD B-215 OKHLA INDUSTRIAL AREA PHASE-I NEW DELHI- 110020 D-38 OKHLA PHASE I	<b>DELHI PALAM AIRPORT CODE - 1303</b>	KHASARA NO 434, MAIN WEST END GREEN FARM HOUSE SOCIETY NEAR SHIV MURTI KANGPURI, MARHAPUR, NEW DELHI 110037
<b>DELHI DELHI 21 NO CODE - 1314</b>	21 RING ROAD , TRANSPORT CENTRE (NEAR PUNJABI BAGH FLY OVER) NEW DELHI-110035	<b>DELHI 13 NO CODE - 1304</b>	13, RING ROAD, TPT CENTRE (NEAR PUNJABI BAGH FLY OVER) NEW DELHI-110035
<b>DELHI DELHI 36 NO</b>	36, RING ROAD, TPT CENTRE NEAR PUNJABI BAGH FLY OVER NEW DELHI-110035	<b>DELHI NIZAMUDDIN RAILWAY STATION CODE - 1326</b>	HOUSE NO. - 31-C, NANGLI RAJA PUR NEAR NIZAMUDDIN RAILWAY STATION GATE NO.-2, & NEAR ISBT SARAI KALEKHA, DELHI-110013
<b>DELHI RAMBAGH CODE - 1331</b>	OM LOGISTICS LTD 9062/13 RAMBAGH ROAD NEAR AZAD MARKET CHOWK DELHI 110006	<b>DELHI TIKRI BORDER CODE - 1307</b>	OM LOGISTICS LTD PLOT NO 547 RAWAR SINGH MARKET NEAR JAY MATA DHERM KANTA METRO HILL NO 729, TIKRI BORDER 110041
<b>GOA CODE - 1501</b>	OM LOGISTICS LTD PLOT NO.S141 PHASE 2B, NEAR KAVI CAFE, NEAR LURMAT PRINTING PRESS VERNA INDUSTRIAL ESTATE VERNA, GOA, 403722	<b>GOA GOA-MAPUSA CODE - 1503</b>	OM LOGISTICS LTD SHOP NO.B-3, MUDDAWADDO NEAR KARASWADA CIRCLE MAPUSA BICHULIM HIGHWAY, KARASWADA, MAPUSA - GOA 403 526
<b>GUJARAT AHMEDABAD HUB (RAJODA) CODE-301</b>	SURVEY NO 862,174 BEHIND KANKAVATI HOTEL VILLAGE RAJODA, SARKHEJ BAVLA HIGHWAY, DISTT.- AHMEDABAD PIN -382220	<b>GUJARAT AHMEDABAD HUB POD OFFICE CODE-301</b>	SURVEY NO 862,174 BEHIND KANKAVATI HOTEL VILLAGE RAJODA, SARKHEJ BAVLA HIGHWAY, DISTT.- AHMEDABAD PIN -382220
<b>GUJARAT VASTRAPUR (AIR CARGO OFFICE ) CODE-302</b>	OM LOGISTICS LTD 511,5 <sup>TH</sup> FLOOR SAFAL PRELUDE, CORPORATE ROAD, PRAHLADNAGAR, PRAHLADNAGAR, SATELLITE, AHMEDABAD- 380015.	<b>GUJARAT AHMEDABAD AIRPORT CODE-328</b>	OM LOGISTICS LTD 37 ARVIND NAGAR SOCITY NEAR KALKA PARK NEAR RANGUL SAKRAKRAK, AHMEDABAD -GUJARAT, PIN CODE-372475
<b>GUJARAT ASLALI CODE - 303</b>	F-8, RADHE KRISHNA ESTATE SHREE PUNJAB DHABA WALI B/H PARICHAY HOTEL ASLALI DIST. AHMEDABAD (GUJARA) PIN CODE -382427	<b>GUJARAT CHANGODAR CODE - 304</b>	OM LOGISTICS LTD NEAR PATEL TRANSPORT COMPANY SARKHEJ SANAND ROAD SARKHEJ DISTT : AHMEDABAD PIN CODE : 382410
<b>GUJARAT JAMNAGAR CODE - 305</b>	OMLOGISTICS LTD PLOT 555, G. I. D. C. PHASE II, NEAR VISHAL CHOWK, JAMNAGAR, GUJARAT 361001	<b>GUJARAT GANDHIDHAM CODE - 306</b>	OM LOGISTICS LTD PLOT NO-81 SEC-1 BEHIND MODERN SCHOOL GANDHIDHAM-370201
<b>GUJARAT BHUJ</b>	OPP ESSAR PETROL PUMP BHUJ-BHACHAU HIGHWAY ROAD	<b>GUJARAT SANTEJ-RAKHANPUR</b>	SHOP NO- 8, AMBIKA COMPLEX RAKHANPUR,GIDC SANTEJ



7/19

<b>CODE - 308</b>	VILLAGE DHANETI - KUTCH PIN CODE - 370001	<b>CODE- 309</b>	AHMEDABAD -382721
<b>GUJARAT</b> <b>VATWA - AHMD RAIL</b>	SHOP NO 3 DIVYA COMPLEX OPP GROUND WATER TANK	<b>GUJARAT</b> <b>GANDHINAGAR</b>	OM LOGISTICS LTD PLOT NO-101/3 GIDC ENGG ESTATE SECTOR-28 GANDHINAGAR
<b>CODE- 310</b>	NR. TEL. EXCHANGE BOMBAY CONDUCTOR ROAD PH-1, GIDC VATWA AHMEDABAD PIN NO 382443	<b>CODE- 311</b>	GUJARAT -382028
<b>GUJARAT</b> <b>ANAND</b>	OM LOGISTICS LTD ROOM NO-1 GIDC COLONY	<b>GUJARAT</b> <b>SURENDRA NAGAR</b>	OM LOGISTICS LTD SHOP NO27 OPP IOC PETROL PUMP MARKETING YARD WADHWAN CITY SURENDRANAGAR GUJARAT 382028
<b>CODE- 312</b>	NEAR OSWAL CHOWKDI, VITRAL DUTUG NAGAR, ANAND-GUJARAT - 388001	<b>CODE- 314</b>	
<b>GUJARAT</b> <b>BHAVNAGAR</b>	SHOP NO -29 ,SHADGURU COMPLEX NARI CHOKDI BHAVNAGAR -	<b>GUJARAT</b> <b>UMERGAON</b>	OM LOGISTICS LTD SHOP NO-1 , PLOT NO - 301 RAHLEM COMPLEX
<b>CODE - 315</b>	GUJRAT-364004	<b>CODE- 316</b>	NEAR UMERGAON WEIGH BRIDGE OPP TELERUKAPATI LAKHES P.LTU, UMERGAON GUJRAT -396171
<b>GUJARAT</b> <b>CHATTRAL</b>	OM LOGISTICS LTD SHOP NO7 KRISHNA COMPLEX DHANOT DATTVA CHATTRAL DISSTMEHSANA	<b>GUJARAT</b> <b>NARODA</b>	OM LOGISTICS LTD ADD- 3 KARUNESH APPARTMENTI SUTRA KARKHANA
<b>CODE - 317</b>	GUJARAT -382729	<b>CODE - 318</b>	NEAR GANGOTRI HOTEL, GALAXY CINEMA ROAD AHMEDABAD - 382220
<b>GL . T</b> <b>SANAND</b>	OM LOGISTICS LTD PLOT NO 362GIDC PHASE NEAR MELDI MATA MANDIR, DUAL GAUN SANAND AHMEDABAD-382110	<b>GUJARAT</b> <b>HAZIRA</b>	OM LOGISTICS LTD ROAD NO.9 NEAR LAXMIVILLA TOWNSHIP GIDC SACHIN HAZIRA -394510
<b>CODE - 319</b>		<b>CODE - 320</b>	
<b>GUJARAT</b> <b>METODA (RAJKOT)</b>	OM LOGISTICS LTD SHOP NO. 74, VANIJAYA BHAWAN, KISHAN GATE NO: 3 G.I.D.C., METODA, RAJKOT, GUJARAT- 362827	<b>GUJARAT</b> <b>SHAPAR (RAJKOT)</b>	OM LOGISTICS LTD BEHIND PRITUKRIPA HOTEL.
<b>CODE - 322</b>		<b>CODE - 323</b>	NEAR RAJKOT HONDA SHOWROOM. OPP. MUKLIFAK WEIGH BKISE, GUNDAL ROAD, SHAPAR, RAJKOT, GUJARAT 360024
<b>GUJARAT</b> <b>VITHALAPUR</b>	OM LOGISTICS LIMITED VITHALAPUR T. PUDUOK INDUSTRIAL PARK	<b>GUJARAT</b> <b>BECHARAJI</b>	OM LOGISTICS LTD SURVEY NO. -105, NAVIYANI
<b>CODE- 324</b>	VITHALPUR MANDAL AHMEDABAD GUJRAT NEAR HONDA PRITUKRIPA PIN CODE- 382120	<b>CODE-329</b>	VILLAGE ,NEAR SUZUKI MOTOR GUJARAT PLANT DELBARAJI, AHMEDABAD, PIN CODE- 384210
<b>GUJARAT</b> <b>ANKLESHWAR</b>	SHOP NO12.13 SAI ARTECH SHOPPING CENTER KALIPUR CHURWALI, S/F AMIN FM PETROL PUMP, SERVILE ROAD,GIDC, ANKLESHWAR- 393002	<b>GUJARAT</b> <b>SURAT</b>	A 40- ROYAL TOWNSHIP, OPP. - JAIPUR GOLDEN KADODARA ROAD, SAROLI, SURAT (GUJRAT) PIN CODE -395010
<b>CODE-401</b>		<b>CODE - 402</b>	
<b>GUJARAT</b> <b>DAHEJ</b>	OM LOGISTICS LTD SHOP NO 12 SHALIGRAM COMPLEX DAHEJ KIL ROAD TALUKA-VAGHRA DAHEJ (392130)	<b>GUJARAT</b> <b>BARODA (VADODARA)</b>	C-1 TO 12, MARUTI ESTATE, NR. HALOL HIGHWAY TOLL NAKA, GOLDEN CHUKALI, VADODARA.(GUJ.) - 390022
<b>CODE -403</b>		<b>CODE - 601</b>	
<b>GUJARAT</b> <b>MAKARPURA</b>	PLOT NO - 761. G.I.D.C. - MAKARPURA, NEAR ABB BACK GATE , MAKARPURA BARODA - PIN CODE-390010	<b>GUJARAT</b> <b>SAMAKHIYALI</b>	25, GREEN VEW COMPLEX, SAMAKHAYALI TALUKA BACHO KUTCH, PIN CODE -370150
<b>C 602</b>		<b>CODE - 605</b>	
<b>GUJARAT</b> <b>SAVLI</b>	OM LOGISTICS LTD 78. SOLACE PARK, BEHIND ICICI BANK, MANUSAR - SAVLI ROAD, VADODARA - 391776	<b>GUJARAT</b> <b>HALOL</b>	OM LOGISTICS LTD PLOT NO - 108 ,NEAR NAVJIVAN HOTEL HALOL -HALOL HIGHWAY VILLAGE MAGHARAK THE- HALOL, DISTI - PANCHMAHAL HALOL - 389350
<b>CODE - 608</b>		<b>CODE - 1603</b>	
<b>GUJARAT</b> <b>DAMAN</b>	OM LOGISTICS LTD SHOP NO-2, RAGHUBIR COMPLEX NEAR DAMAN WEIGH BRIDGE VAPI DAMAN MAIN ROAD, DABHEL, DAMAN - 396210	<b>GUJARAT</b> <b>VAPI</b>	OM LOGISTICS LTD NEAR MOHAN FATAK OPP.CWC WAREHOUSING ,KARAM BELLY VILLAGE-VAPI-396195
<b>CODE - 1201</b>		<b>CODE- 1202</b>	
<b>GUJARAT</b> <b>SILVASSA-GUJARAT</b>	OM LOGISTICS LTD SHOP NO 580 VAPI-SILVASSA MAIN ROAD, NEAR HOTEL HARYANA PIPARIYA TALUKA PARDI, DIST : VALSAD PIN 396193	<b>GUJARAT</b> <b>MORBI</b>	OM LOGISTICS LTD 4-BHAKTI CHAMBER,OPP. CIRCUIT HOUSE,N.H-8/A,NEAR GURUKRUPA HOTEL-MORBI, PIN-363642
<b>CODE- 1203</b>		<b>CODE-2824</b>	
<b>GUJARAT</b> <b>RAJKOT</b>	OM LOGISTICS LTD R.S.NO.109/1 PAIKI PLOT NO.3A,4A AND 5A ARHMEJASAD RAJKOT -SNH, KUDJA TRANSPORT NAGAR, NEAR 7 HANUMAN,	<b>GUJARAT</b> <b>JUNAGARH</b>	OM LOGISTICS LTD RADHABEN GOPAL BHAI, SILVAPARA, BANSARI ESTERT, GUDAUN NO. 14, NEAR KRANUHA WAY BRUJ, JUNAGARH, GUJARAT 362003
<b>CODE - 2902</b>		<b>CODE - 2904</b>	
<b>HARYANA</b>	N.H.1, OPP. - MIRCHI RESTORENT	<b>HARYANA</b>	N.H.1, OPP. - MIRCHI RESTORENT



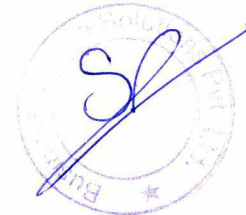
8/19



<b>AMBALA HUB</b> <b>CODE - 103</b>	NEAR KAUSHAL FILLING STATION SAPMSALAKHTI KUALI, MUPHRI, AMBALA (HARYANA) PIN CODE - 136135	<b>AMBALA BRANCH</b> <b>CODE- 103</b>	NEAR KAUSHAL FILLING STATION SAPMSALAKHTI KUALI, MUPHRI, AMBALA (HARYANA) PIN CODE - 136135
<b>HARYANA</b>	OM LOGISTICS LTD.	<b>HARYANA</b>	OM LOGISTICS LTD.
<b>BAGHOLA HUB</b> <b>CODE-1338</b>	VILLAGE - BAGHOLA, JANALI ROAD DISTT-PALWAL, HARYANA PIN NO. 121105 HARYANA	<b>BAGHOLA BRANCH</b> <b>CODE - 1339</b> <b>(BKG &amp; DLY)</b>	VILLAGE - BAGHOLA, JANALI ROAD PIN NO.121105,HARYANA
<b>BALLABGARH</b> <b>CODE-1323</b>	OM LOGISTICS LTD. PLOT NO-71 TRANSPORT NAGAR SEC-58 JHARSETLI BALLABGARH.121004	<b>HARYANA</b> <b>BAWAL</b> <b>CODE- 3010</b>	C/O ICD WARE HOUSE,OPP .NTN COMPANY,NH-8 DELHI JAIPUR HIGHWAY BAWAL-123501
<b>HARYANA</b> <b>BINOLA- MARUBENI</b> <b>CODE- 1335</b>	OM LOGISTICS LTD BINOLA INDUSTRIAL AREA, PLOT NO-1. NEAR - TERRY SOFT, NH-8, GURGAON (HARYANA)- 122001	<b>TML CCD-BINOLA</b> <b>CODE-1359</b>	PLOT NO. - 1. BINOLA INDUSTRIAL AREA NEAR TERRYSOFT, GURGAON HARYANA. PIN CODE - 122001
<b>HARYANA</b> <b>BINOLA HUB</b> <b>CODE- 1328</b>	OM LOGISTICS LTD PLOT NO. - 4, BINOLA INDUSTRIAL AREA NEAR TERRYSOFT, GURGAON HARYANA PIN CODE - 122001	<b>HARYANA</b> <b>BINOLA (POD)</b> <b>CODE- 1332</b>	PLOT NO. - 4. BINOLA INDUSTRIAL AREA NEAR TERRYSOFT, GURGAON HARYANA. NEAR N. H. - 8 (DELHI JAIPUR HIGHWAY) PIN - 122001
<b>H. IA</b> <b>DHARUHERA</b> <b>CODE- 1401</b>	OM LOGISTICS LTD SHOP NO 6 NEAR DELSTER CITY MALL, DHARUHERA, PIN CODE -123106	<b>HARYANA</b> <b>SAMPLA</b> <b>CODE- 1357</b>	NH10 DELHI ROHTAK ROAD NEAR BALA JI COLLEGE SAMPLA ROHTAK HARYANA
<b>HARYANA</b> <b>FARIDABAD</b> <b>CODE- 1308</b>	OM LOGISTICS LTD 23/1, DLF INDUSTRIAL AREA FARIDABAD-121003	<b>HARYANA</b> <b>GURGAON-HERO HONDA</b> <b>CODE-1327</b>	OM LOGISTICS LTD HOUSE NO 175. DARWARIPUR ROAD NEAR SUZUKI PARKING KHEKTI DAULA GURGAON-122004
<b>HARYANA</b> <b>KULANA</b> <b>CODE- 1403</b>	OM LOGISTICS LTD SHIV MANDIR NAKAYAN MARKET,SHOP NO.-3 KULANA CHOWK PARULAJI ROAD, VILL.KULANA P.O PATAUDA KULANA DISTT. JHAJJAR (HARYANA) PIN- 124108	<b>HARYANA</b> <b>SAROORPUR</b> <b>CODE-1367</b>	OM LOGISTICS LTD. SHOP NO.2 NANGLA GUJAN, SUHNA ROAD, NEAR KAWAL INTERNATIONAL SCHOOL AND NEAR SAROORPUR INDUSTRIAL AREA, D-122005
<b>NIT BRANCH</b> <b>CODE-1340</b>	OM LOGISTICS LTD 23/1, DLF INDUSTRIAL AREA FARIDABAD-121003	<b>HARYANA</b> <b>GURGAON</b> <b>CODE- 1318</b>	PLOT NO.-90, SECTOR - 18 NEAR MULTIVAC INDIA PVT. LTD. GURGAON (HARYANA) PIN CODE - 122001
<b>LOGISTICS DIVISION</b> <b>CODE-1319</b>			
<b>HARYANA</b> <b>PANIPAT</b> <b>CODE-1302</b>	OM LOGISTICS LTD SP OFFICE NEW ANAJ MANDI SHOP NO-25 PANIPAT HARYANA-132103		
<b>HARYANA</b> <b>SULTANPUR</b> <b>CODE- 1364</b>	VOLKSWAGEN GROUP SALES INDIA PVT LTD. VILLAGE SULTANPUR TEHSIL FARUKHNAGARGURGAON HARYANA 123506	<b>HARYANA</b> <b>JAMALPUR HUB</b> <b>CODE- 1342</b>	KHASRA NO2/11 NEAR BHARAT PETROL STATE HIGHWAY NO.-26 GURGAON PATOU DI ROAD JAMALPUR (HR)-123003
<b>JAMALPUR INSTITUTE</b> <b>CODE-1369</b>	KHASRA NO2/11 NEAR BHARAT PETROL STATE HIGHWAY NO.-26 GURGAON PATOU DI ROAD JAMALPUR (HR) 123003	<b>HARYANA</b> <b>JHAJJAR</b> <b>CODE-1361</b>	OM LOGISTICS LTD NEAR MARUTI SHOW ROOM MAIN BUS STANDS VILLAGE, DADRI TOTE JHAJJAR H.R 124103
<b>HARYANA</b> <b>KUNDLI-HUB</b> <b>CODE 1309</b>	OM LOGISTICS LTD. PLOT NO-286,KHATA NO-414 NEAR PANJAB STEEL FACTORY, SHANTI DHARAMKANTA, PILAU PARLYARI,KUNDLI, DISTT:SONIPAT (HARYANA). PNICODE:131028	<b>HARYANA</b> <b>KUNDLI-HSIDC</b> <b>CODE-1373</b>	OM LOGISTICS LTD. PLOT NO. 35/3/1/22 DOUBLE ROAD KUNDLI IND AREA TOWARDS NIFTEM CHOWK, OPP. TRIVENI POLYMERS KUNDLI SONIPAT- HARYANA- 131028
<b>HARYANA</b> <b>KARNAL</b> <b>CODE-1358</b>	OM LOGISTICS LTD SHOP NO.553 NEW GRAIN MARKET KARNAL PIN-132001	<b>HARYANA</b> <b>KUNDLI</b> <b>CODE 1309</b>	OM LOGISTICS LTD. PLOT NO-286,KHATA NO-414 NEAR PANJAB STEEL FACTORY, SHANTI DHARAMKANTA, PILAU PARLYARI,KUNDLI, DISTT:SONIPAT (HARYANA). PNICODE:131028
<b>HARYANA</b> <b>MANESAR</b> <b>CODE - 1322</b>	OM LOGISTICS LTD VILL. NAHARPUR KASHAN, NEAR IMT MANESAR. PIN CODE - 122050	<b>HARYANA</b> <b>MURTHAL</b> <b>CODE-1349</b>	OM LOGISTICS LTD MAIN G.T. ROAD NEAR TARA PETROL FLY OVER MURTHAL SONIPAT HARYANA-131027
<b>MANESAR-FLEET</b> <b>CODE-1355</b>	OM LOGISTICS LTD VILL. NAHARPUR KASHAN.	<b>HARYANA</b> <b>MITROL-PALWAL</b>	NATIONAL HIGHWAY NO. - 2 NEAR HNV VIKAS GROUP MITROL PALWAL



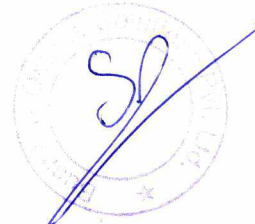
	NAHARPUR NAWDHA ROAD, NEAR IMT MANESAR. PIN CODE - 122050	<b>CODE-1344</b>	HARYANA. PIN CODE - 121105
<b>HARYANA</b>	OM LOGISTICS LTD	<b>HARYANA</b>	OM LOGISTICS LTD
<b>HISSAR</b>	GANESH NAGAR GALI NO 2 DELHI ROAD HISSAR	<b>BHIWANI</b>	NEAR GRASIM TEXTILE BHIWANI
<b>CODE-1333</b>		<b>CODE-2903</b>	
<b>HARYANA</b>	OM LOGISTICS LTD.	<b>HARYANA</b>	OM LOGISTICS LTD
<b>YAMUNA NAGAR</b>	W1 INDUSTRIAL AREA, PLOT NO. 027 GUJ MANUJI ROAD, NEAR HANUMAN MANDIR	<b>ROHTAK</b>	2213/1. 2214/1. OPP. L.P.S. HISSAR
<b>CODE-112</b>	YAMUNA NAGAR HARYANA-135001	<b>CODE-2901</b>	ROAD, ROHTAK (HARYANA) PIN CODE - 124001
<b>HIMACHAL PARDESH</b>	OM LOGISTICS LTD	<b>HIMACHAL PARDESH</b>	NEAR RADHA SWAMI SATSANG BRAWAN VILLAGE KIRPALPUR
<b>KALA AMB</b>	TRILOKPUR ROAD OPP.HP SHYAM DHARAM KANTI A -KALA-AMB (HP) 173030	<b>NALAGARH</b>	PINJORE ROAD , NALAGARH H.P PIN CODE - 174101
<b>CODE-1106</b>		<b>CODE-1107</b>	
<b>HIMACHAL PARDESH</b>	OM LOGISTICS LTD	<b>HIMACHAL PARDESH</b>	NANGAL UNA SUPER EXPRESS HIGHWAY
<b>PONTA SAHIB</b>	NEAR BARHATI PATROL PUMP NAHAN ROAD NEAR TANJUKI PUNJI PAUNTA SAHIB H.P. PIN-173025	<b>MEHATPUR</b>	NEAR INDIAN OIL PETROL PUMP MEHATPUR TEH. & DISTT. UNA ( H.P. ) 174315
<b>CODE-106</b>		<b>CODE-105</b>	
<b>HIMACHAL PARDESH</b>	UNA ROAD AMB NEAR BHARAT PETROL PUMP TH.AMB	<b>HIMACHAL PARDESH</b>	OM LOGISTICS LTD
<b>AMB UNA</b>	DISST. UNA (H.P.) PIN CODE - 177203	<b>BADDI</b>	KHARSA NU. 054220, NEAR RADHA SWAMI SATSANG BHAWAN SAI ROAD TEH .BADDI DISTT. SOLAN (HP) PIN CODE = 173205
<b>CODE-1108</b>		<b>CODE-1103</b>	
<b>HIMACHAL PARDESH</b>	OM LOGISTICS LTD	<b>HIMACHAL PARDESH</b>	OM LOGISTICS LTD
<b>SOLAN</b>	RADHA SOAMI SATSANG ROAD VILL ANJI. (HP) BAKOLI K S SOLAN, HIMACHAL PRADESH-173211	<b>PARWANOO</b>	KHARSA NU 434710, OPPOSITE NAGARPALIKA OFFICE SECTOR 1 PARWANOO, BEHIND HDFC BANK. PIN 173220
<b>CODE-104</b>		<b>CODE-102</b>	
<b>J &amp; K.</b>	OM LOGISTICS LTD.	<b>JHARKHAND</b>	OM LOGISTICS LIMITED
<b>SAMBHA</b>	N.H.-1, NEAR BHARGAV COLLEGE	<b>ADITYAPUR</b>	C/O NATRAJ TOOLS
<b>CODE-1911</b>	OPPRANGOLI HOTEL SAMBHA PIN- 184121	<b>CODE - 3409</b>	B-6, 2 PHASE INDUSTRIAL AREA ADITYAPUR JHARKHAND-831013
<b>J &amp; K.</b>	OM LOGISTICS LTD	<b>J &amp; K.</b>	OM LOGISTICS LTD
<b>JAMMU</b>	H.N.-6, WARD NO.- 4 RAJEEV COLONY	<b>SRI NAGAR</b>	F -7 TRANSPORT NAGAR PARIMPORA
<b>CODE-1905</b>	NEAR BISHNA ROAD BARI BRAHMNA OPP. ARMY TRAINING GROUND, JAMMU- 181133	<b>CODE-1910</b>	OPPOSITE J&K BANK FRUIT MADI SRINAGAR PIN -191117
<b>J &amp; K.</b>	OM LOGISTICS LTD		
<b>KATHUA</b>	N.H.NO.-1, OPP.CHINAB TEXTILE MILLS KATHUA (J&K) 184102		
<b>CODE-1907</b>			
<b>JHARKHAND</b>	OM LOGISTICS LTD	<b>JHARKHAND</b>	OM LOGISTICS LIMITED
<b>DHANBAD</b>	DHANBAD BARWADDA KISSAN CHOCK, VIJAY PETROL PUMP PIN CODE-826004	<b>NILDIH NAMDA BASTI</b>	A/2 VIKASH COLONY NAMDA BASTI NEAR NILDIH PARK JAMSHEDPUR-831003
<b>CODE-3408</b>		<b>CODE-3406</b>	
<b>JHARKHAND</b>	OM LOGISTICS LTD	<b>JHARKHAND</b>	OM LOGISTICS LTD
<b>RANCHI</b>	PLOT NO-204,209 & 210 KHATA NO-182 VILLAGE -BARGAWA NAMKUM, RANCHI- 834009	<b>JAMSHEDPUR-BHILAI PAHARI</b>	PLOT NO.18 BBHILAI PAHARI HIGHWAY NO.33 NEAR YADAV HOTEL JAMSHEDPUR PIN -831012
<b>CODE-3402</b>		<b>CODE - 3405</b>	
<b>JHARKHAND</b>	G T ROAD KENDUA MORE.NEAR	<b>JHARKHAND</b>	OM LOGISTICS LTD
<b>CHOUPARAN</b>	CHOUPARAN POLICE STATION ,CHOUPARAN,HAZARIBAGH, JHARKHAND- 825206	<b>HAZARIBAG</b>	MASHI PRDHI POST OFFICE(BABHANBAY) DIST. HAZARIBAG PIN. CODE.825301
<b>CODE-3411</b>		<b>CODE-3417</b>	
<b>KARNATAKA</b>	OM LOGISTICS LTD	<b>KARNATAKA</b>	OM LOGISTICS LTD
<b>BANGLORE AIRPORT</b>	SYNO192/7, SHOP NO1 SUGGATTA NORTH	<b>BOMMANSANDRA</b>	SLN AUTOYARD NO. 7/3 1ST CROSS BOMMANSANDRA, INDUSTRIAL AREA OPPOSITE KANORVA PLASTIC PVT. LTD., BOMMANSANDRA-560100
<b>CODE-501</b>	VILLAGE MAIN ROAD HUNASAMARANA HALL, JALA HOBLI, BANGALORE NUKH 562157	<b>CODE-503</b>	
<b>KARNATAKA</b>	OM LOGISTICS LTD	<b>KARNATAKA</b>	OM LOGISTICS LTD
<b>AREA OFFICE</b>	NO 8/1, 2ND FLOOR, 2ND MAIN ROAD, RAGHAVENDRA LAYOUT, NEXT TO RNS MOTORS BEHIND HOTEL MARKS GRANDEUR, YESHWANTHRIR BANGALORE - 560022 KARNATAKA, INDIA	<b>BIDADI</b>	PULLI TALUK BUILDING SURVEY NO.99/3 & 99/4 SHANUMANGLA PUSTI, GOLLAKAPLATA VILLAGE, OPPOSITE BOSCH COMPANY, BIDADI INDUSTRIAL AREA, BIDADI-BANGALORE STATE -KARNATAKA 562109
<b>CODE-530</b>		<b>CODE-529</b>	
<b>KARNATAKA</b>	OM LOGISTICS LTD	<b>KARNATAKA</b>	OM LOGISTICS LIMITED
<b>BELGAUM</b>	CTS NO 1644/2, PARVATI BUILDING, OPP-H.P GAS GODOWN, BAUXITE ROAD, VAIBHAV NAGAR-BELGAUM-590010	<b>SHIMOGA</b>	NBP-7 INDUSTRIAL ESTATE SAGAR ROAD, SHIMOGA (KATAKANA) PIN NO-577201
<b>CODE-506</b>		<b>CODE-516</b>	
<b>KARNATAKA</b>	OM LOGISTICS LTD	<b>KARNATAKA</b>	OM LOGISTICS LIMITED



19/19



<b>KALASIPALYAM</b>	NO.11,9TH CROSS H SADDIAH ROAD	<b>HARIHAR</b>	RAVI COMPLEX, KODIYAL HOSPET ROAD
<b>CODE-507</b>	BANGALORE,560027	<b>CODE-515</b>	NH-4 BY PASS,KUMARAPATTNAM 581123
<b>KARNATAKA</b>	OM LOGISTICS LTD	<b>KARNATAKA</b>	OM LOGISTICS LTD
<b>PEENYA</b>	SRS ROAD 22/1 1ST MAIN ROAD PEENYA NEAR IS PETROL PUMP, PUTTA ALHAK BUILDING 1ST STAGE	<b>DODDABALLAPUR</b>	K.I.D.B., VEERABURA POST MEDICINE PALURKY CIRCLE DODDABALLAPUR
<b>CODE-508</b>	BANGLORE 560058	<b>CODE-509</b>	BANGALORE -561203
<b>KARNATAKA</b>	OM LOGISTICS LTD	<b>KARNATAKA</b>	OM LOGISTICS LTD
<b>BANGALORE-HUB</b>	NH4 PUNE TO BANGALORE HIGHWAY	<b>MYSORE</b>	PLOT 268 HEBBAL INDUSTRIAL AREA
<b>CODE-511</b>	OPPOSITE OF INDIAN PETROL BANK DABBASPET BANGALORE -562111 KARNATAKA KARNATAKA INDIA	<b>CODE-2301</b>	NEAR DARSHAN FLEXIBLE HUTTAHALLI, MYSORE, PIN 570018 KARNATAKA
<b>KARNATAKA</b>	OM LOGISTICS LIMITED	<b>KARNATAKA</b>	OM LOGISTICS LIMITED
<b>WHITEFIELD</b>	1293, V.L COLONY	<b>HOSPET</b>	VILL:HOSHLINGAPUR
<b>CODE-512</b>	NEAR SAI BABA ASHRAM KADUGUDI, WHITEFIELD, BANGALORE- 560067	<b>CODE-513</b>	NEAR HOSSALLI CROSS HIGHWAY,HOSPET-583201
<b>KARNATAKA</b>	OM LOGISTICS LIMITED	<b>KARNATAKA</b>	OM LOGISTICS LTD,
<b>MANGALORE</b>	SAPTHAMBA COMPLEX NH.17 KULAI	<b>DHARWAD</b>	PLOT NO 147 BELUR INDUSTRIAL AREA DHARWAD KARNATAK-580011
<b>CODE-518</b>	HOSABETTU MANGALORE-575019	<b>CODE-523</b>	
<b>KARNATAKA</b>	OM LOGISTICS LTD	<b>KARNATAKA</b>	OM LOGISTICS LTD
<b>NARSAPURA</b>	SY NO 117/4 & 118/3 UDDAPPANAHALLI VILLAGE OPP TU KAMAT UPLIYAK HOTEL, NARSAPURA-563130	<b>KARNATAKA</b>	VOLKSWAGEN GROUP SALES PVT. LTD
<b>CODE-525</b>		<b>CODE-527</b>	PLOT NO. 366, 1ST INDUSTRIAL AREA DABASPLI, BANGALORE, KARNATAKA, 562111
<b>KARNATAKA</b>	OM LOGISTICS LTD	<b>KARNATAKA</b>	OM LOGISTICS LTD
<b>BIDAR</b>	MALGE COMPLEX, HUMNABAD ROAD	<b>HUBLI</b>	G B PATIL BUILDING
<b>CODE-532</b>	BIDAR, KARNATAKA PIN-585402	<b>CODE-1802</b>	OPP BAY PASS N H 04 NEW GUBBER HUBLI-580028
<b>KARNATAKA</b>	OM LOGISTICS LTD		
<b>TUMKUR</b>	TUMKAR BY PASS NH - 4		
<b>CODE-514</b>	NEAR BHARTH PETROL PUMP AKAKERE POST, TUMKUR, KARNATAKA (STATE) PIN CODE - 572102		
<b>MAHARASHTRA</b>	OM LOGISTICS LTD	<b>MAHARASHTRA</b>	OM LOGISTICS LTD
<b>AURANGABAD WALUJ</b>	GATE NO-49 ,NAYA GAON	<b>AURANGABAD-CHIKALTHANA</b>	PLOT NO C-13/14 MIDC CHIKALTHANA OPP LUPIN LTD AURANGABAD - 431210
<b>CODE-201</b>	MITHEBASTI OPP GAREWARE POLYSTER GATE NO -2, PIN CODE -431136	<b>CODE-202</b>	
<b>MAHARASHTRA</b>	OM LOGISTICS LIMITED	<b>JALGAON ST</b>	BACK SIDE OF AXIS BANK ATM VILL. BAMBHORI. N.H.6
<b>JALGAON</b>	NEAR BOSCH CHASSIS SYSTEMS INDIA OLD VIDYA PEETH ROAD VILLAGE JALGAON (MH), PIN CODE - 425002	<b>CODE-203</b>	TAL. DHARANGAON JALGAON - 425002, STATE - MAHARASHTRA
<b>CODE-203</b>			
<b>MAHARASHTRA</b>	OM LOGISTICS LTD	<b>MAHARASHTRA</b>	OM LOGISTICS LTD
<b>AURANGABAD-SKODA</b>	GATE NO-49 ,NAYA GAON, MITHEVASTI OPP GAREWARE POLYSTER GATE NO -2 PIN CODE -431136	<b>JALNA</b>	VAISHNAVI AGENCY MARATHE PARK, VISHAL CORNER, AURANGABAD-BEED BY PASS ROADJALNA (MH)-431203
<b>CODE-205</b>		<b>CODE-206</b>	
<b>MAHARASHTRA</b>	OM LOGISTICS LTD	<b>MAHARASHTRA</b>	OM LOGISTICS LTD
<b>AURANGABAD-ZALTA PHATA</b>	CHITTE PIMPALGAON SERVER NO.3 DIST.AURANGABAD MH. PIN CODE.431007	<b>MANMAD</b>	KIRTI NAGAR, NANDGAON ROAD MANMAD . PIN CODE - 423104
<b>CODE-209</b>		<b>CODE-204</b>	
<b>MAHARASHTRA</b>	OM LOGISTICS LTD	<b>MAHARASHTRA</b>	CHATARPATI SHIVAJI MAHARAJ DHANDE GRAM PANCHAYAT SHIVER, DISTT - AKOLA - MAHARASTRA PINCODE-444001
<b>AURANGABAD-NANDED</b>	HYDERABAD ROAD,DHANE GAON,PANKAJ NANDED, MAHARASTRA NANDED DIST NANDED PIN CODE 431603	<b>AKOLA</b>	
<b>CODE-208</b>		<b>CODE-2829</b>	
<b>MAHARASHTRA</b>	OM LOGISTICS LTD,	<b>MAHARASHTRA</b>	OM LOGISTICS LTD,
<b>NASIK-SINNER</b>	PLOT NO. B - 153 NEAR MASTER GARMENT . OPP. STARE ENGG, PIN CODE - 422103	<b>NASIK GONDE IGATPURI</b>	GAT NO -B 528/B/1 POST GONDE (DHUMALA ) TAL - IGATPURI , DISTT -NASIK - 422403
<b>CODE-2403</b>		<b>CODE-2404</b>	
<b>MAHARASHTRA</b>	OM LOGISTICS LTD	<b>MAHARASHTRA</b>	OM LOGISTICS LTD
<b>NAGPUR</b>	LOGISTICS WARE HOUSING KHASRA NO.568,MOUZA GONDKHERI, OPP.CHAINWIM COMPANY, AMKAVATI ROAD,TEH-KALMESHWAR, NAGPUR-441501	<b>MUMBAI VILEPARLE</b>	SHOP11/12, EAST BHARAT KUNJ SOCIETY, SHRADDHANAND ROAD, OPP TU SYNDICATE BANK,VILEPARLE EAST MUMBAI 400057
<b>CODE-2501</b>		<b>CODE-2103</b>	





<b>MAHARASHTRA</b> <b>NASIK</b>	OM LOGISTICS LTD. PLOT NO- E15. OPP EPCOS CO.	<b>MAHARASHTRA</b> <b>VASAI MUMBAI</b>	OM LOGISTICS LTD GALA NO SHEETAL SAPNA
<b>CODE -2401</b>	NEAR RELJANCE PETROL PUMP MIDC, SATPUR NASHIK 422007.	<b>CODE-2104</b>	INDUSTRIAL ESTATE VASAI SATIVALI KUAJ BHUTAPADA VASAI EAST, PIN NO 401208
<b>MAHARASHTRA</b> <b>BHIWANDI-KOPER</b>	OM LOGISTICS LTD SHED NO-1 GALA NO- 4 & 5	<b>MAHARASHTRA</b> <b>VASHI</b>	OM LOGISTICS LTD
<b>CODE-2105</b>	ARIHANT COMPLEX NEAR KOPER BUS STOP PURNA VILLAGE, BHIWANDI - 421302	<b>CODE-2107</b>	PLOT NO. 35, SECTOR-19A, OPPOSITE INDO OIL, VASHI- NAVI MUMBAI, PIN CODE- 400705
<b>MAHARASHTRA</b> <b>MUMBAI AIRPORT</b>	OM LOGISTICS LTD SHOP3, EAST BHARAT KUNJ SOCIETY.	<b>MAHARASHTRA</b> <b>SAKINAKA</b>	GALA NO-03.D' SOUZA COMPOUND 90 FEET ROAD, SAKINAKA, ANDHERI (E) MUMBAI PIN-400072
<b>CODE-2108</b>	SHRADHDHANAND ROAD, OPP TU SYNDICATE BANK, VILEPARKE EAST, MUMBAI 400057	<b>CODE-2110</b>	
<b>MAHARASHTRA</b> <b>TARAPUR</b>	OM LOGISTICS LTD PLOT NO-P-77 MIDC	<b>MAHARASHTRA</b> <b>TALOJA</b>	PLOT NO PAC 7, BEL NAKA OPP TO BHARAT ELECTROINICS, NEAR BHAKAT PETIKUL PUMP, MIDC TALOJA ROAD NAVI MUMBAI -410208
<b>CODE-2111</b>	OPP CAMLIN FACTORY CAMLIN NAKA BOISAR TARAPUR DIST., PALGHAR - 401506	<b>CODE-2112</b>	
<b>MAHARASHTRA</b> <b>DOMBIVLI</b>	OM LOGISTICS LTD GALLA NO.2, BHALLA NAGAR, KALYAN SHIL ROAD	<b>MAHARASHTRA</b> <b>MAHAD</b>	OM LOGISTICS LIMITED AJIJA COMPLEX ,NAGAL WADI FATA, MIDC MAHAD DISTT - RAIGAD PIN: - 402301
<b>Cr 113</b>	NEAR LALIT KATTA, MANPADA, DOMBIVALI, DOMBIVALI-EAST. PIN CODE - 421204	<b>CODE-2114</b>	
<b>MAHARASHTRA</b> <b>THANE</b>	PLOT NO B-60/1 ROAD NO 33 WAGLE INDUSTRIAL ESTATE THANE (W)-400604	<b>MAHARASHTRA</b> <b>GOREGAON</b>	OM LOGISTICS LTD. CORPORATE AVENUE SHOP NO-12 A, GROUND FLOOR, SUNAWALA ROAD, GURUGRON (E), MUMBAI-400063
<b>CODE-2115</b>		<b>CODE - 2116</b>	
<b>MAHARASHTRA</b> <b>BHIWANDI</b>	OM LOGISTICS LTD. SONALE VILLAGE, MUMBAI - NASIK HIGHWAY, OPP. PRESIDENTLY SCHOOL, TAL. BHIWANDI. DIST., THANE - 421302	<b>MADHYA PRADESH</b> <b>PITHAMPUR</b>	OM LOGISTICS LTD PLOT NO-567/568 NEAR INDRAMAMA MANDIR OPPOSITE SHAKTI PUMP, SEC 3 DIFC ROAD MUMBAI - 401372
<b>CODE-2117</b>		<b>CODE-2601</b>	
<b>MAHARASHTRA</b> <b>DAHISAR</b>	OM LOGISTICS LTD NIKISHA INDUSTRIAL ESTATE GALANO. 15 BEHIND SAMRAT HOTEL PANDURANGWADI NEAR WESTERN EXP. HIGHWAY, MIKA ROAD EAST . THANE 401107	<b>MAHARASHTRA</b> <b>MASJID BUNDER</b>	OM LOGISTICS LTD GODOWN NO4, BHANDUP STREET, GROUND FLOOR, OPP PRABHU MANSION, DANA BUNDER, MASJID EAST, MUMBAI-400 009
<b>CODE-2120</b>		<b>CODE-2121</b>	
<b>MAHARASHTRA</b> <b>BHANDUP</b>	OM LOGISTICS LTD UNIT NO. WS, WAKAS SILK MILL COMPOUND, L.B.S MARG, BEHIND DENA BANK, BHANDUP WEST, MUMBAI 400078	<b>MAHARASHTRA</b> <b>BHANDARA</b>	OM LOGISTICS LIMITED NO.537, NEAR GIROLA SQUARE, PAVANI ROAD, KARDHA, DISTT-BHANDARA ( MAH) 441904
<b>CODE-2128</b>		<b>CODE-2504</b>	
<b>MAHARASHTRA</b> <b>BUTIBORI</b>	OM LOGISTICS LIMITED PLOT NO. X-13, NEAR HOTEL ROYAL REGENCY BUTIBORI INDUSTRIAL AREA, BUTIBORI, NAGPUR. PIN-441122	<b>MADHYA PRADESH</b> <b>BHOPAL</b>	OM LOGISTICS LTD C/O SUBHAM WARE HOUSE VILLAGE RAPADIYA / POST BARGRODA KATARKA HILL 7 NEW BY PASS 11 MILL TOLLE, STATE - MADHYA PARDESH
<b>CODE -</b>		<b>CODE-3502</b>	
<b>MADHYA PRADESH</b> <b>GWALIOR</b>	OM LOGISTICS LTD MALNPUR INDUSTRIAL AREA BHAKAT MARKET NEAR AXIX BANK GWALIOR - 477117	<b>MADHYA PRADESH</b> <b>INDORE</b>	OM LOGISTICS LTD CENTRE POINT RAUKHEDI VILLAGE A.B. ROAD INDORE-452001
<b>CODE-3503</b>		<b>CODE-3501</b>	
<b>MADHYA PRADESH</b> <b>INDORE-DEWAS</b>	OM LOGISTICS LTD. SURVEY # 501 VILLAGE KHATAMBA, NEAR JOHNDEERE PLANT DEWAS BHOPAL HIGHWAY DEWAS. ( M.P) PIN CODE - 455001	<b>MADHYA PRADESH</b> <b>JABALPUR</b>	OM LOGISTICS LTD NH-7, PATAN BY PASS, NAGPUR ROAD NEAR INDIAN OIL PUMP JABALPUR-48002(M.P)
<b>CODE-3508</b>		<b>CODE-3506</b>	
<b>MAHARASHTRA</b> <b>NAVASHEVA</b>	OM LOGISTICS LTD SHOP NO. - 1, NEAR AJIT TYRES & YASH DIESEL JASAI URAN ROAD, POST JASAI, DIST. RAJGARH, PIN CODE - 410206	<b>MAHARASHTRA</b> <b>ROHA</b>	OM LOGISTICS LTD. MORE VASANT, GALI NO 4 NEAR SUDARSHAN BUS STOP, DHATAV MIDC, ROHA RAIGAD - 402116
<b>CODE-2122</b>		<b>CODE-2124</b>	
<b>MAHARASHTRA</b> <b>RASAYANI</b>	OM LOGISTICS LTD AT SOMATANE VILAGE, TAL:-PANVEL POST SOMATANE DIST RAIGAD-410206	<b>MAHARASHTRA</b> <b>PALGHAR</b>	OM LOGISTICS LTD SHREE INDUSTRIES GALA NO 12,13 BEHIND C L PETROL PUMP PALGHAR BOISAR ROAD, PALGHAR -40140
<b>CODE-2125</b>		<b>CODE-2126</b>	
<b>MADHYA PRADESH</b> <b>REWA</b>	OM LOGISTICS TD NEAR THOMES FACTORY & ITI ,CHORHATA	<b>MADHYA PRADESH</b> <b>RATLAM</b>	OM LOGISTICS LTD NEAR - AMBECKER NAGAR, JAORA ROAD, RATLAM-457001.
<b>CODE-3507</b>		<b>CODE-3509</b>	

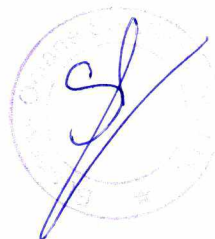


	REWA MP PIN CODE 486006		STATE - MADHYA PRADESH
<b>MADHYA PRADESH</b>	OM LOGISTICS LTD	<b>MADHYA PRADESH</b>	OM LOGISTICS LTD
<b>NIMRANI</b>	SHOP NO 7 NARMDA COMPLEX	<b>ICCHAPUR</b>	PURANA BUS STAND MAIN ROAD
<b>CODE-3513</b>	NEAR KHETAN FERTILIZER A.B ROAD	<b>CODE-3514</b>	ICCHAPUR WARD NO.14
	NIMRANI 451660 KHRGONE		DISTT. BURHANPUR PIN 450441
<b>MADHYA PRADESH</b>	4 NO. KANYAKUBJ NAGAR		
<b>INDORE- AIRPORT</b>	AIRPORT ROAD , NEAR BSF CAMP		
<b>CODE-3516</b>	CITIZEN HOSPITAL , INDORE-452005		
<b>ORISSA</b>	OM LOGISTICS LTD	<b>ORISSA</b>	OM LOGISTICS LIMITED
<b>BHUBNESHWAR</b>	PLOT NO - 573,574	<b>ROURKELA</b>	WOODYS COMPLEX
<b>CODE-4101</b>	SAMEIGADIA,CHAKEISAHANI	<b>CODE-4106</b>	NEAR MIA MANSA KANTI, KUAKMUNDA ROAD.
	P.O-RASULGARH, BHUBNESWARPIN CODE 751010		VEDVYASH-769004 ROURKLELA ODISHA
<b>ORISSA</b>	OM LOGISTICS LTD.	<b>ORISSA</b>	OM LOGISTICS LIMITED
<b>CUTTACK</b>	NEAR BISMILA WEIGHT BRIDGE.	<b>JHARSGURA</b>	SHOP NO4, SAHUPADA,
<b>CODE-4107</b>	NH-5,HARIANTA,MANGULI AREA,	<b>CODE-819</b>	POST - BADMAL,JHARSUGUDA,
	CUTTACK 754025 ODISHA		ODISHA-768202
<b>ORISSA</b>	OM LOGISTICS LTD	<b>ORISSA</b>	OM LOGISTICS LTD.
<b>B/ RE</b>	N.H. 5, NEAR GAJANAN HOTEL	<b>BERHAMPUR</b>	OPPOSITE MRF TYRE
<b>CO-4108</b>	SERGARH , BALASORE.	<b>CODE-4109</b>	NEAR MAHINDRA SERVICE STATION
	ODISHA -758060		ALUJI NAGAR, HALDIPADAR,
<b>ORISSA</b>	OM LOGISTICS LTD.	<b>ORISSA</b>	OM LOGISTICS LTD.
<b>KEONJHAR</b>	POST-GUTUR, DIST-KEONJHAR	<b>SAMBALPUR</b>	N.H.6, NEAR SHANTI ROADWAYS,
<b>CODE-4110</b>	NEAR RADIO STATION	<b>CODE-4105</b>	BARAIPALI, SAMBALPUR - 768150
	PIN-78001		(ODISHA)
<b>PUNJAB</b>	SULTANBINT ROAD NEAR AJAY PALACE	<b>PUNJAB</b>	JAGJIT PAPER MILLS
<b>AMRITSAR</b>	DUBURAJI AMRITSAR	<b>HOSHIARPUR</b>	VPO-NASRALA,JALANDHAR ROAD
<b>CODE-1906</b>	PIN CODE - 143001	<b>CODE-1104</b>	HOSHIARPUR PIN-146001
<b>PUNJAB</b>	OM LOGISTICS LTD	<b>PUNJAB</b>	OM LOGISTICS LTD.
<b>CHANDIGARH</b>	PLOT NO-186,IND AREA PHASE-2	<b>LUDHIANA-HUB</b>	C/O GRAINTEC INDIAN LTD
<b>CODE-1101</b>	RAMDARBAR	<b>CODE- 1920</b>	VPO BUDHEWAL NEAR KOHARA CHOWK
	CHANDIGARH - 160002		DIST. LUDHIANA 141112
<b>PUNJAB</b>	E-1,INDUSTRIAL AREA	<b>PUNJAB</b>	OM LOGISTICS LTD.
<b>JALANDHAR</b>	NEAR BSNL EXCHANGE	<b>MOHALI</b>	D-215, PHASE VIII-B
<b>CODE-1102</b>	JALANDHAR PIN CODE-144004	<b>CODE-1105</b>	NEAR PTC NEWS
	STATE - PUNJAB		MOHALI (PB)-160059
<b>PUNJAB</b>	OM LOGISTICS LTD	<b>PUNJAB</b>	OM LOGISTICS LTD
<b>LUDHIANA</b>	D-24,PHASE-V, FOCAL POINT	<b>PHAGWARA</b>	NEAR TELEPHONE EXCHANGE ,
<b>CODE-1901</b>	LUDHIANA-141010	<b>CODE- 1908</b>	MODEL TOWN, PHAGWARA PIN CODE - 144101
<b>PUNJAB</b>	OM LOGISTICS LTD	<b>PUNJAB</b>	OM LOGISTICS LTD
<b>PATIALA</b>	G.T ROAD, OPP. GODZE CYCLE STAND	<b>BATHINDA</b>	SEPAL HOTEL STREET
<b>CODE-1904</b>	NEAR STATE BANK OF PATIALA OPP	<b>CODE- 1912</b>	NEAR TINKONI CHOWK
	GOETZE CYCLE STAND		BATHINDA PUNJAB 151001
	BAHADURGARH--PATIALA-147002		
<b>PUNJAB</b>	PATIALA ROAD,ROTI BRIDGE	<b>PUNJAB</b>	OM LOGISTICS LTD
<b>NABHA</b>	NEAR MINNA RICE MILLS	<b>ZIRAKPUR</b>	SCO NO. 8 ,NEAR MUNDRA SWEETS
<b>CODE-1111</b>	NABHA-147201	<b>CODE-1110</b>	RANJAN PLAZA, ZIRAKPUR-140603
<b>RAJASTHAN</b>	OM LOGISTICS LTD	<b>RAJASTHAN</b>	OM LOGISTICS LTD.
<b>JAIPUR</b>	NEAR DPS SCHOOL N.H. 8	<b>KOTA</b>	390 NEW TRANSPORT NAGAR,
<b>CODE-1701</b>	AJMER ROAD BANKROTA JAIPUR 302026	<b>CODE-1707</b>	GOBRIYA BAWADI, KOTA 324005
<b>RAJASTHAN</b>	OM LOGISTICS LIMITED	<b>RAJASTHAN</b>	OM LOGISTICS LTD
<b>BHILWARA</b>	NEAR SHIV VANDANA HOTEL OPP.	<b>ALWAR</b>	NEAR SARE PUNJAB HOTEL
<b>CODE-1705</b>	MANDAPIYA RAILWAL STATION	<b>CODE-1706</b>	DELHI ROAD MIA ALWAR
	NEAR GURJAK BHAWAN LEFT TURE BY		DIST. ALWAR -301001, STATE -
	PASS, BHILWARA. 311802		RAJASTHAN
<b>RAJASTHAN</b>	OM LOGISTICS LTD.	<b>RAJASTHAN</b>	OM LOGISTICS LTD
<b>AJMER</b>	SHINDRA BY PASS NH 8,	<b>BANSWARA</b>	NEAR NAVKAR DHARAM KATA BEHIND
<b>CODE-1708</b>	BY PASSJAIPUR-AJMER ROAD	<b>CODE-1710</b>	BEHIND SHANKAR PRESEDENCY
	RAJASTHAN-305001		HOTEL UDAIPUR ROADPIN CODE - 327001



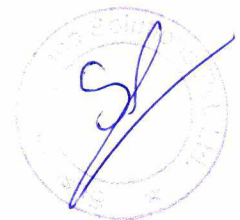


<b>RAJASTHAN</b> <b>JODHPUR</b> <b>CODE-1709</b>	OM LOGISTICS LTD. BEHIND BASNI POLICE STATION, DIPANLAXMI MARKET BASNI PHASE2, JODHPUR, 342005	<b>RAJASTHAN</b> <b>UDAIPUR</b> <b>CODE-1702</b>	OM LOGISTICS LTD OPP.NAGDA PETROL PUMP NEAR KSLB OFFICE PRAJAP NAGAR, UDAIPUR -313001
<b>RAJASTHAN</b> <b>NEEMRANA</b> <b>CODE-1711</b>	OM LOGISTICS LTD MOLADIA VILLAGE, NH-8, DELHI JAIPUR HIGHWAY, OPPPOSITE MADHUTAYANA ANKUAN RESIDENCY , NEEMRANA, DIST- ALWAR-	<b>RAJASTHAN</b> <b>KHUSKERA</b> <b>CODE-1712</b>	PLOT NO-G 102 &103 NEAR PARAMOUNT CABLE RICCO INDLAREA KHUSKERA (RAJASTHAN)-301707
<b>RAJASTHAN</b> <b>SHRI GANGA NAGAR</b> <b>CODE-1715</b>	OM LOGISTICS LTD. V.P.O 2ML VILLAGE NATHAWALA HANUMANGARH ROAD SHRI GANGA NAGAR-335001	<b>RAJASTHAN</b> <b>BHIWADI</b> <b>CODE-701</b>	OM LOGISTICS LIMITED G-273, RIICO INDS AREA G- 273 , PHASE - 1 NEAR SBI BANK NEELAM CHOWK, BHIWADI-301019
<b>RAJASTHAN</b> <b>BEAWAR</b> <b>CODE-1716</b>	OM LOGISTICS LTD. RIICO INDUSTRIAL AREA PHASE 1 AJMER ROAD OPP. BSNL OFFICE BEAWAR(R.J.), 305901	<b>RAJASTHAN</b> <b>PALI</b> <b>CODE-1720</b>	OM LOGISTICS LTD. OPP. PANHARI HOTEL SUMERPUR ROAD NEAR SHREE NATH RESTAURENT, PALI RAJASTHAN, 306401.
<b>RAJASTHAN</b> <b>SIKAR</b> <b>CODE-1719</b>	OM LOGISTICS LTD NEAR OM TOYATA, BHAGIRATH TOWER, JAIPUR ROAD GOKULPURA SIKAR-302001	<b>SIKKIM</b> <b>RANGPO</b> <b>CODE-820</b>	NEAR SMOKE TESTING CENTER. IBM,RANGPO.EAST SIKKIM,PIN-737132.
<b>TRIPURA</b> <b>AGARTALA</b> <b>CODE-821</b>	OM LOGISTICS LTD. SURYA ROAD AGRTALA , NEAR DEVEN ROADWAYS PIN- 799001,TRIPURA		
<b>TAMILNADU</b> <b>CHEMBRAPPAKKAM</b> <b>CODE- 1012</b>	OM LOGISTICS LTD . NEAR SHRI SASTHA ENGG COLLEGE. CHENNAI- BANGALORE HIGHWAY CHEMBARAPAKKAM , CHENNAI - 602103	<b>TAMILNADU</b> <b>HOSUR</b> <b>CODE-505</b>	OM LOGISTICS LTD 199/1A, ADDAKURKKI VILLAGE OPP TAB INDIA HOSUR TALUK KRISHNAGIRI DIST TAMILNADU - 635109
<b>TAMILNADU</b> <b>TIRUNELVELI</b> <b>CODE-903</b>	OM LOGISTICS LTD. PLOT NO- 163C , CHIDAMBARA NAGAR, SHANKAR NAGAR, TIRUNELVELI-627357( T.N)	<b>TAMILNADU</b> <b>TIRUMUDIVAKKAM</b> <b>CODE -1013</b>	OM LOGISTICS LTD PLOT NO:119, KARAPPAGAM NAGAR MAIN ROAD, THIRUMUDIVAKKAM,CHENNAI - 600044.
<b>TAMILNADU</b> <b>ORAGADAM</b> <b>CODE-1014</b>	OM LOGISTICS LTD, VALLAKUTTAI VILLAGE . MATHUR POST, SRIPERUMBUR TALUK, KANCHIPURAM DISTRICT - 602105	<b>TAMILNADU</b> <b>AMBUR</b> <b>CODE-1015</b>	OM LOGISTICS LTD SHOP NO.7 OAR THEATER COMPLEX M.C ROAD HOUSING BORD AMBUR-635802
<b>TAMILNADU</b> <b>RANIPET</b> <b>CODE- 1004</b>	PLOT NO -64- 66 SIPCO T INDS COMPLEX NEAR PULIANTHANGAL BUS STOP RANIPET-632403	<b>TAMILNADU</b> <b>SHOLAVARAM-TATA CCD</b> <b>CODE-1035</b>	OM LOGISTICS LTD. 598/4A, 598/4B OLD G.N.T ROAD, SHOLAVARAM, CHENNAI - 600067
<b>TAMILNADU</b> <b>TIPOONDI</b> <b>CODE-1005</b>	6A,GORIMEDU STREET BY PASS ROAD,OLD GUMMIDIPOONDI THIRUVALLUR (DIST) 601201	<b>TAMILNADU</b> <b>CHOO LAI</b> <b>CODE-1006</b>	OM LOGISTICS LTD NEW NO 280 ,WALLTAX ROAD OPP.BLUE STAR HOTEL, PARK TOWN CHENNAI-600003
<b>TAMILNADU</b> <b>PUZHAL CHENNAI</b> <b>CODE-1002</b>	OM LOGISTICS LTD OLD S.NO 929/8, NEW NO. 925/5A1, PLOT NO. 347 OMMAKULAMEDU, REDHILLS ROAD, MADHAVARAM, CHENNAI - 600060	<b>TAMILNADU</b> <b>SHOLAVARAM -HUB</b> <b>CODE-1003</b>	OM LOGISTICS LTD. 598/4A, 598/4B OLD G.N.T ROAD, SHOLAVARAM, CHENNAI - 600067
<b>TAMILNADU</b> <b>S V CHATRAM</b> <b>CODE- 1001</b>	ECHOOR VILLAGE & POST THENNERI VIA,BEHIND SUMSUNG INDIA ELECTRONICS,SUNGUVARCHATRAM SRIPERUMBUR TALUK, KANCHIPURAM- CHENNAI, TAMIL NADU 631604	<b>TAMILNADU</b> <b>COIMBATORE</b> <b>CODE-901</b>	OM LOGISTICS LTD. 10/80 E, SENGODAGOUNDENPUDUR, ARASUR (PO), SULUR VIA, COIMBATOTE-641407
<b>TAMILNADU</b> <b>M M NAGAR</b> <b>CODE-1007</b>	OM LOGISTICS LIMITED PLOT NO.31,SIDDCO INDUSTRIAL ESTATE MARAIMALAI NAGAR, KANCHIPURAM DIST CHENNAI - 603209	<b>TAMILNADU</b> <b>CHENNAI AIRPORT -ALUNDUR</b> <b>CODE- 1010</b>	OM LOGISTICS LTD NO. 17/10, NOBLE 1ST STREET NEXT TO ENGINE VALVES LTD. ALUNDUR, CHENNAI-600016
<b>TAMILNADU</b> <b>PERUNGUDI</b> <b>CODE-1008</b>	OM LOGISTICS LTD 45, CORPORATION ROAD SEEVARAM ,PERENGUDI, CHENNAI-600096	<b>TAMILNADU</b> <b>PUDUCHERRY</b> <b>CODE-2701</b>	OM LOGISTICS LTD NO.29, 1ST CROSS STREET, JOHN KUMAR NAGAR MOOLAKULAM, PUDUCHERRY - 605010
<b>TAMILNADU</b>	OM LOGISTICS LTD.	<b>TAMILNADU</b>	OM LOGISTICS LTD.



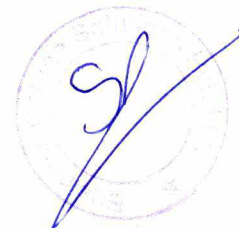


<b>MADURAI</b>	PASSINGAPURAM, OPP VISHAL NAGAR PHASE-1, P.O- PODUMBU, MADURAI-625018 (T.N)	<b>SALEM</b>	3/393, SULAIMEDU, UTTAMACHOLAPURAM, SALEM-636011 (T.N)
<b>CODE-2001</b>		<b>CODE-3001</b>	
<b>TAMILNADU</b>	OM LOGISTICS LTD S.G.J. COMMERCIAL COMPLEX PERIYAKULAM ROAD AMMAYANAYAKANUR, DINDIGUL -624201	<b>TAMILNADU</b>	OM LOGISTICS LTD. 105A, NEHRU ROAD, TAMIL NAGAR.SIVAKASI-626123 (T.N)
<b>DINDIGUL</b>		<b>SIVAKASI</b>	
<b>CODE-2002</b>		<b>CODE-2003</b>	
<b>TAMILNADU</b>	OM LOGISTICS LTD. H.N. 43 & 44, E.B. ROAD TRICHY, OPP. LURUDUSWAMY PARK, TRICHY-620002 (T.N)	<b>TAMILNADU</b>	OM LOGISTICS LTD. 27/ A, ADHIBHAR GARDEN, NEAR BHARAT DAKSHIN GAS AGENCY, ANUPURPALAYAM, TIRUPUR -641652 (T.N)
<b>TRICHY</b>		<b>TIRUPUR</b>	
<b>CODE-3002</b>		<b>CODE-3004</b>	
<b>TAMILNADU</b>	OM LOGISTICS LTD. 127/1, BHAVANI MAIN ROAD, NEAR NEW POLICE STATION KATAPALAYAM PUDUR, CHITHODE , ERODE-638102 (T.N)	<b>KERALA</b>	OM LOGISTICS LTD. DOOR NO- 4/644 A, MANJU COTTAGE UDOUG MONDEL NEAR FACI MARKEI -ELUUR, NEAR TCU, COCHIN-683501
<b>ERODE</b>		<b>COCHIN</b>	
<b>CODE-3007</b>		<b>CODE-3003</b>	
<b>KERALA</b>	OM LOGISTICS LTD. V.P- 841, NETTAYAM, TRIVENDRUM-695013 (KERALA)	<b>KERALA</b>	OM LOGISTICS LTD PUTHENPURAYIL HOUSE, MOOLAVATTOM P.O. KOTTAYAM, KERALA- 686012
<b>TRIVANDRUM</b>		<b>KOTTAYAM</b>	
<b>CODE-3008</b>		<b>CODE-905</b>	
<b>KL. A</b>	OM LOGISTICS LTD. BC ROAD NEAR BENERNI CONVENT, FEROK (PO), PHERUVANNUR, CALICUT- 673631 (KERALA)	<b>KERALA</b>	OM LOGISTICS LTD. KRS BUILDING , OPP. UNITED BREWERIES, KANDIKUDE WESI, PALLAKKAD- 678823 (KERALA)
<b>CALICUT(KONZIKODE)</b>		<b>PALLAKKAD</b>	
<b>CODE-3011</b>		<b>CODE-3005</b>	
<b>UTTRAKHAND</b>	OM LOGISTICS LTD. A-61, TRANSPORT NAGAR SAHARANPUR ROAD DEHRADUN NEAR ISBT STATE - UTTARAKHAND	<b>UTTRAKHAND</b>	OM LOGISTICS LTD KHASHARA NO 274 OPP UPSIG SCHOOL,RIVEK SIDE ROAD PARGANA PALCHWALUUN , NEAR FALCU BAG SELAQUI ( DEHRADUN) STATE-UTTARAKHAND, PIN CODE-248011
<b>DEHRADUN</b>		<b>SELAQUI DEHRADUN</b>	
<b>CODE-4001</b>		<b>CODE-4004</b>	
<b>UTTRAKHAND</b>	OM LOGISTICS LIMITED RESHAM MAJRI, HARIDWAR-ROAD LAL TAPPER- DEHRADUN (U.K). PIN CODE - 248140	<b>UTTRAKHAND</b>	OM LOGISTICS LTD PLOT NO. 41 SECTOR 11, I.I.E SIDCUL HARIDWAR, PIN CODE-249403
<b>DEHRADUN-LALTAPPER</b>		<b>HARIDWAR</b>	
<b>CODE-4005</b>		<b>CODE-2205</b>	
<b>HARIDWAR-FLEET</b>			
<b>CODE-2215</b>			
<b>UTTRAKHAND</b>	OM LOGISTICS LTD, PLOT NO- 24 C, SECTOR-2 IIE- RUDRAPUR (PANTNAGAR) PIN- 263153	<b>UTTRAKHAND</b>	OM LOGISTICS LTD. KEI INDUSTRIAL AREA NH- 58, VILLAGE- LIBERHERE, TEH- ROORKEE PIN -247667
<b>RUDRAPUR</b>		<b>LIBERHERE</b>	
<b>CODE-3301</b>		<b>CODE-4010</b>	
<b>UTTRAKHAND</b>	OM LOGISTICS LTD VILLAGE - SISOUNA, SIDKUL ROAD SITARGANJ DISTT.- USNAGAR UTTRAKHAND- 262405	<b>UTTRAKHAND</b>	KUNDESHARI KASHIPUR ROAD NEAR SAMAR STUDY HALL KASHIPUR (UTTRAKHAND)-244713
<b>SITARGANJ</b>		<b>KASHIPUR</b>	
<b>CODE-3304</b>		<b>CODE-3302</b>	
<b>UTTRAKHAND</b>	OM LOGISTICS LTD NEAR SHAHEED GYAN SINGH BISHT, BHARAT PETROL PUMP,ROORKEE- DEHRADUN ROAD-247661 UTTRAKHAND	<b>UTTRAKHAND</b>	OM LOGISTICS LTD KANPUR LUCKNOW HIGHWAY BANTHAR IN FRONT OF VIRENDRA SWARUP GROUP OF INSTITUTE
<b>ROORKEE</b>		<b>UNNAO</b>	
<b>CODE-4003</b>		<b>CODE-2210</b>	
<b>UTTAR PRADESH</b>	OM LOGISTICS LTD OPP.NATIONAL FEELING STATION NEAR APNA DHABA YADAV MARKET SIKANDRA AGRA PIN CODE 282007	<b>UTTAR PRADESH</b>	OM LOGISTICS LTD 13F/13E/13D TRASPORT NAGER NEAR BAJRANG CHOURAHA MUNDERA ALLAHABAD-211011
<b>AGRA</b>		<b>ALLAHABAD</b>	
<b>CODE-2202</b>		<b>CODE-1804</b>	
<b>UTTAR PRADESH</b>	OM LOGISTICS LTD DAMODAR VIHAR COLONY, NEAR RUSA HOSPITAL OPP. HANUMAN MURTI, POST NAGLA MANDIR ALIGARH-202001	<b>UTTAR PRADESH</b>	OM LOGISTICS LTD. 164, MURARI NAGAR OLD G.T. ROAD OPOSIT AANCHAL BANQUET HALL DIST. BULANDSAHAR NEAR DEVI MANDIR KHIRIWA/ID/ 203131
<b>ALIGARH</b>		<b>KHURJA</b>	
<b>CODE-1604</b>		<b>CODE-2211</b>	
<b>UTTAR PRADESH</b>	OM LOGISTICS LTD MUNAWAR-MARKET,SWALE NAGAR OPP. KARBALA,RAMPUR ROAD BAREILLY-243001	<b>UTTAR PRADESH</b>	OM LOGISTICS LTD MORADABAD DELHI HIGHWAY BHARTIYA GRAMM, OPP. CHADDA - RIIBREF NAIPURA, GAJROULLA, U.P.
<b>BAREILLY</b>		<b>GAJROULLA</b>	
<b>CODE-2206</b>		<b>CODE-2204</b>	
<b>UTTAR PRADESH</b>	A-1376, SITE-III, MEERUT ROAD INDUSTRIAL AREA NEAR GUTAM TURYUJA SHOWROOM & FORD SERVICE CENTER OPP. CLOUD- 9 MARRIGE HOME,	<b>UTTAR PRADESH</b>	OM LOGISTICS LTD BHIJLORA BUJURAG NEAR UPKAR HOSPITAL EKLA MARKET VARANASI
<b>GHAZIABAD</b>		<b>GORAKHPUR</b>	
<b>CODE-1315</b>		<b>CODE-1806</b>	



15/19

	GHAZIABAD PIN. CODE. 201001		ROAD GORAKHPUR UP-
<b>UTTAR PRADESH ETAWAH CODE-1809</b>	OM LOGISTICS LTD NH-2,KANPUR ROAD,PILKHAR ETAWAH (UP) PIN COAD-206001	<b>UTTAR PRADESH KANPUR CODE-1602</b>	OM LOGISTICS LTD. PLOT NO.-9 SECTOR-A N.H.-2 ISPAT NAGAR KANPUR, PIN CODE:- 208022
<b>UTTAR PRADESH CHANDALI CODE-1810</b>	OM LOGISTICS LTD GODHANA BY PASS CHAURAHA, NEAR MICAL SARAI DELHI KOLKATTA MAIN HIGHWAY CHANDALI PIN:- 232101	<b>UTTAR PRADESH MEERUT CODE-2203</b>	OM LOGISTICS LTD 31/9 R.K. PURK OPP BANK OF BRODA NEAR DURGA DHARM KANTA DELHI ROAD MEERUT - 250002
<b>UTTAR PRADESH LUCKNOW CODE-1801</b>	OM LOGISTICS LTD PLOT NO - F-30/308 & 31/308, NEAR 5NO DARKNER BEHIND MAURYA HOTEL, TRANSPORT NAGAR LUCKNOW - 226012	<b>UTTAR PRADESH CHINHAT CODE-1805</b>	OMLOGISTICS LTD KHASRA NO-394 S/3, VILLAGE- DHAWA KHASRA (NAR) OPP. TO B.R DUBEY ENCLAVE CHINHAT - 226019
<b>UTTAR PRADESH MUZAFFARNAGAR CODE- 2212</b>	OM LOGISTICS LTD RANA CHOWK MEERUT ROAD NEAR RANA STEEL FACTORY MUZAFFARNAGAR - 251002	<b>UTTAR PRADESH KOSI KALAN CODE-2213</b>	OMLOGISTICS LTD NEAR JBM AUTO LTD A-4 KOTWAN INDUSTRIAL AREA KOSI KALAN-281403 DISTT. MAITHURA (U.P)
<b>UTTAR PRADESH MORADABAD CODE- 2201</b>	OM LOGISTICS LTD GODOWN NO 121 ADARSH NAGAR MORADABAD (U.P.)-244001	<b>UTTAR PRADESH NOIDA CODE-1310</b>	OM LOGISTICS LTD B - 202 PHASE - II NOIDA NEAR LAXMI REMOTE PIN CODE - 201301
	OMX INFO		
<b>UTTAR PRADESH NOIDA CODE-1311</b>	OM LOGISTICS LIMITED C-135 SECTOR-10 G B NAGAR NOIDA -201301	<b>UTTAR PRADESH NOIDA CODE-1372</b>	OM LOGISTICS LTD A-46 SECTOR- 65 NOIDA PIN CODE-201301
<b>UTTAR PRADESH GREATER NOIDA CODE-1312</b>	OM LOGISTICS LTD D-57 SITE-IV, SECT-31 GREATER NOIDA (U.P.)-201306	<b>UTTAR PRADESH SURAJPUR CODE- 1370</b>	OM LOGISTICS LTD PLOT NO- 11, UDYOG KENDRA ECOTECH-3 SURAJPUR G.NOIDA
<b>UTTAR PRADESH HAPUR CODE-1363</b>	OM LOGISTICS LTD VILLAGE- ACHEJA DELHI HAPUR ROAD OPP. SAI MANDIR DISTT - HAPUR-245101	<b>UTTAR PRADESH RAMPUR CODE- 3305</b>	OM LOGISTICS LTD GANI MANJIL, MAIN TIAL ROAD (CIVIL LINE ) NEAR HERO HONDA SHOW ROOM RAMPUR ( U.P), PIN CODE - 244901
<b>UTTAR PRADESH SAHARANPUR CODE-2207</b>	OM LOGISTICS LTD DEHRADUN ROAD, TRANSPORT NAGAR, PLOT NO 556, SAHARANPUR-247001	<b>UTTAR PRADESH TALANAGRI CODE-2216</b>	OM LOGISTICS LTD NEAR SHIKSHI HOSPITAL KAMGHAI ROAD, TALASPUR, TALANAGRI PIN CODE 202002
<b>UTTAR PRADESH VARANASI CODE-1803</b>	OM LOGISTICS LTD 34 VAHINI PAC GATE FRONT OF ORIENTAL MARUTI SUZUKI WAREHOUSE BHULLANPUR VARANASI PIN CODE-- 221108	<b>UTTAR PRADESH SIKANDRABAD CODE-1352</b>	OM LOGISTICS LTD SHOP NO-2, NEAR NAVEEN SABJI MANDI ON G.T ROAD SIKANDRABAD UTTER PRADESH-203205.
<b>UTTAR PRADESH JHANSI CODE-3517</b>	OM LOGISTICS LTD., NEAR SHRI RAM DHABA,VILLAGE NAYAGAON MAUJA,SHIVPURI ROAD JHANSI-284003 STATE - UTTAR PRADESH	<b>UTTAR PRADESH JAGDISHPUR CODE-1813</b>	OM LOGISTICS LTD WORKS:D12,SEC-21 JAGDISPUR INDUSTRIAL AREA AMETHI: UP-227817
<b>UTTAR PRADESH SONALI BORDER CODE- 1814</b>	OM LOGISTICS LTD PLOT NO. 96 NEAR RAM JANKI CHOWK. MAIN ROAD SONALI UTTAR PRADESH PIN. CODE 273306	<b>SOUTH ANDAMAN PORT BLAIR CODE-837</b>	OM LOGISTICS NEPAL LTD SURVEY NO.: 37/2 22 CHURCH LANE GOALGHAR PORT BLAIR TEHSIL SOUTH ANDAMAN -744104
<b>NEPAL KATHMANDU CODE-2100</b>	OM LOGISTICS NEPAL LTD C/O JKK & ASSOCIATES NEW BANESHWAR, KATHMANDU, NEPAL		



16/19



### 6.3. WEBSITE INFORMATION

- I. We are providing you website link <http://www.businessoctane.com/> along with screenshots of E-waste related details.
  - a. **Note: Screenshot is attached with the file.**
- II. E-waste collection scheme is already mention in the plan.
- III. EPR Plan is attached with file and also updated on website with tollfree no.
- IV. Toll free number is **1800-180-1818** which is showing on web-page.

### 8.0. DETAILS OF PROPOSED AWARENESS PROGRAMMES:

- i. We had done seminars and workshops in given places:

S.No	Event Name	Dates	Location
1	Smart Cities Conclave India 2018	21-22 Feb 2018	New Delhi
2	AIMA's 4th National Leadership Conclave	14th - 15th March 2018	New Delhi
3	4th Learning & Development Leadership Summit 2018	22nd & 23rd March 2018	Mumbai
4	Inflection 2018	19th April 2018	Mumbai
5	3rd Annual E-Commerce CIO Summit	27th - 28th April 2018	Bangalore
6	Workplace 2025 - Technology, Talent & Transformation conclave	26th April 2018	New Delhi
7	Railways Reforms & Governance Conclave	27th April 2018	New Delhi
8	India PSU IT Forum 2018	16th May ,2018	New Delhi
9	India Internet Day	26th April 2018	Gurgaon
10	CII Defence conclave	11-May-18	Gujrat
11	HR Analytics Summit 2018	17th - 18th May 2018	New Delhi
12	BW Digital India Summit	18th May 2018	New Delhi
13	7th Annual Healthcare CIO Summit 2018	18th -19th May 2018	Hyderabad

- ii. Frequency of seminars in a year is approx. 8.
- iii. Target only metro cities.
- iv. Logo for recycling is on packaging.



17/19

**TOWER C, JMD MEGAPOLIS, 5<sup>TH</sup> FLOOR, P 501-P 512, SECTOR 48, SOHNA ROAD, GURGAON, HARYANA-122018**





20 Unique Game Changing Solutions for Customers Professional AV Game Changing Solutions

PRODUCTS & SOLUTIONS ABOUT US

**Ultra Immersive "Collaboration In-a-Box" Solutions**

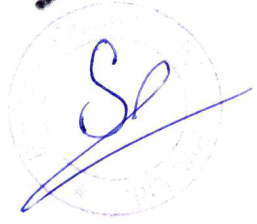
Know More

Visit Our Experience Centers

Book A

Online

Welcome to our site. If you need help simply reply to this message, we are online and ready to help.



Imagine the possibilities that are available when you combine the power of a collaboration video conference with the power of a cheetah. The result is a powerful, game-changing solution for your business. Our Ultra Immersive Video Collaboration and Collaboration In-a-Box solutions are designed to help you work smarter, faster, and more effectively. Contact us today to learn more about our solutions and how we can help you achieve your business goals.

18/19

AREA-HAPUR, U.P.- 245101

**Agreement attached**

7. Estimated budget for Extended Producer Responsibility and allied initiatives to create consumer awareness.

We are still in the process of finalizing the partners and the approach and there is very little knowledge/expertise available to quantify the budget estimates for this area. Hence the numbers given are very tentative and will get firmed up as the time progresses

**Estimated budget for:**

Awareness: 55,000/-

Specific collection scheme: 55,000/-

Channelization: 15,000/-

Recyclers/Dismantlers: Nill

ROHS testing: 15,000/-

8. Details of proposed awareness programmes.

We will create awareness through various media campaigns inclusion of E waste information in printed materials. Special awareness campaigns through call centres/collection points the specific details are still being worked out, we would look forward for inputs from PRO/agencies that we will work with to frame final plan on how to go ahead.

**Budgetary allocation for:**

Details of publications & advertisements: 15000/-

Posters: 15000/-

Number of workshop: 18000/-

Training programme: 15000/-

19/19

